

# TABLE OF CONTENTS

---

<b>1. PRODUCT WARRANTY.....</b>	<b>3</b>
<b>2. CHECKLIST Dealer's File Copy.....</b>	<b>4</b>
Customer's File Copy.....	5
<b>3. INTRODUCTION.....</b>	<b>6</b>
<b>4. SPECIFICATIONS.....</b>	<b>7</b>
<b>5. SAFETY.....</b>	<b>8-9</b>
5.1 Mandatory Safety Shutdown Procedure.....	9-11
<b>6. OPERATION.....</b>	<b>12</b>
6.1 Forward.....	12
6.2 Attaching to and Detaching From a Skidsteer Loader.....	13
6.3 Adjustments.....	14
SP200 Adjustment Drawing.....	15
6.4 Operating Surface Prep.....	16
<b>7. DAILY MAINTENANCE.....</b>	<b>16</b>
7.1 Changing Flails.....	17
<b>8. PARTS.....</b>	<b>18</b>
SP200 Drawing.....	18
SP200 Parts List.....	19
SP200 Crossslide Drawing.....	20&23
SP200 Crossslide Parts List.....	21&24
4-Line Hydraulic Drawing.....	22
4-Line Hydraulic Parts List.....	23
2-Line Hydraulic Drawing.....	24
2-Line Hydraulic Parts List.....	25
Host Kits.....	26-27



# 1. PRODUCT WARRANTY



## **PURPOSE OF POLICY**

The policy covers correction of defects in workmanship and/or materials called to the attention of Coneqtec/Universal and is subject to all conditions of the warranty.

## **STATEMENT OF WARRANTY**

Coneqtec/Universal warrants its products for up to one year from the purchase date when correctly used under normal operating conditions. Coneqtec/Universal makes no other warranty expressed or implied.

This warranty shall not apply to any products that have been altered, changed or repaired in any manner whatsoever. Nor shall it apply to any product which has been subject to misuse, negligence or accident.

The exclusive and sole remedy for breach of contract (including breach of any express or implied warranty) shall be limited to repair, modification or replacement at the sole discretion of Coneqtec/Universal, of non-conforming products as aforesaid. Coneqtec/Universal shall not in any event be liable to anyone. Faulty or suspect parts must be returned to Coneqtec/Universal at user's cost.

## **GENERAL**

Coneqtec/Universal reserves the right to make changes or improvements in design or construction of any part without incurring the obligation to install such changes on any unit previously delivered.

## **WARRANTY PARTS & LABOR PROCEDURES**

### **WARRANTY PARTS & LABOR POLICY**

Warranty parts credits will be allowed for the replacement parts that prove in the company's judgment to be defective in material or workmanship on machines sold to the original purchaser. No consideration whatsoever will be made on used, second-hand, altered or rebuilt machinery.

Only genuine Coneqtec/Universal parts will be used in correction of defective products. Any parts used that are not of Coneqtec/Universal origin will not be warranted unless prior Coneqtec/Universal approval has been granted.

Warranty labor will be paid at \$40 per hour based on flat rates established by Coneqtec/Universal; however, no mileage or mileage time will be reimbursed.

Warranty will not be paid if the dealer is not capable of doing the testing that is required by Coneqtec/Universal (this pertains to hydraulic testing and the use of pressure testing equipment) to determine the location or source of the problem.

### **OWNER RESPONSIBILITY**

Every owner is responsible for the machine's proper use and maintenance. Parts that are simply worn out through normal wear and tear, or abused or damaged due to lack of maintenance or adjustment are not subject for warranty consideration.

### **DEALER RESPONSIBILITY**

Coneqtec/Universal requires that the dealership has a service center that is staffed and has the ability to setup and do pre-delivery on all units prior to delivery and to do testing that is required by Coneqtec/Universal in the event that there is a problem with the machine.

It is also required that the dealers instruct the customer on the proper operation and safety procedures.

## **WARRANTY PROCEDURE**

Warranty will not be considered on the following unless it can be proved there is negligence in workmanship or materials.

Wear items such as pics, pic blocks, blades and cutters.

Hoses that have been worn or damaged by use.

### **PROCEDURE FOR CLAIM**

Prior to starting any warranty work please call Coneqtec/Universal for approval and notification of flat rate allowances. All warranty claims must be received within thirty days of warranty repair in order to be a valid warranty claim. Otherwise warranty claim will be denied. A copy of the parts invoices and shop work orders must be submitted with the warranty form, and the form must be filled out completely with all customer and machine information. The warranty/RGA form with parts should then be sent to the designated location stated on form. Coneqtec/Universal will pay only standard Fed Ex or LTL truck freight on warranty items.

All warranty credits will be applied to the dealer's account.

Revised 11/1/01

## 2. CHECKLIST

---

### DEALER'S FILE COPY

#### 2.1 PRE-DELIVERY

After the Surface Prep has been completely setup and attached to the host machine, inspect the following. Check off each item after the prescribed action is taken.

Check that:

- ◆ No parts of the unit have been damaged in shipment. Check for things such as dents and loose or missing parts; correct or replace components as required.
- ◆ All bolts and fasteners are in place and tightly secured.
- ◆ All grease fittings have been properly lubricated; see lubrication information in this manual.
- ◆ All decals are in place and securely attached.
- ◆ The serial number of your unit is recorded in the space provided on this page.
- ◆ Then, test run the unit while checking that all components are operating correctly.

I acknowledge that the procedures were performed on this unit as outlined above

---

DEALERSHIP NAME

---

DEALER REPRESENTATIVE'S NAME

---

DATE CHECKLIST FILLED OUT

---

#### 2.2 DELIVERY

The following checklist is an important reminder of the valuable information that **MUST** be passed on to the Customer at the time the unit is delivered. Check off each item as you explain it to the Customer.

- ◆ Give the customer his operators manual. Instruct him to be sure to read and completely understand its contents **BEFORE** operating the unit.
- ◆ Explain and review with him the **SAFETY** information in this manual.
- ◆ Explain that regular cleaning and lubrication are required for proper operation and long life. Review with him the lubrication information in this manual.
- ◆ Explain and review with him the service & maintenance information in this manual.
- ◆ Completely fill out the owner's registration, including the customer's signature and return it to the manufacturer.

I acknowledge that the above points were reviewed with me at the time of delivery.

---

CUSTOMER'S SIGNATURE

---

DATE DELIVERED

## 2. CHECKLIST

---

### CUSTOMER'S FILE COPY

#### 2.1 PRE-DELIVERY

After the Surface Prep has been completely setup and attached to the host machine, inspect the following. Check off each item after the prescribed action is taken.

Check that:

- ◆ No parts of the unit have been damaged in shipment. Check for things such as dents and loose or missing parts; correct or replace components as required.
- ◆ All bolts and fasteners are in place and tightly secured.
- ◆ All grease fittings have been properly lubricated; see lubrication information in this manual.
- ◆ All decals are in place and securely attached.
- ◆ The serial number of your unit is recorded in the space provided on this page.
- ◆ Then, test run the unit while checking that all components are operating correctly.

I acknowledge that the procedures were performed on this unit as outlined above

---

DEALERSHIP NAME

---

DEALER REPRESENTATIVE'S NAME

---

DATE CHECKLIST FILLED OUT

---

SERIAL NUMBER

#### 2.2 DELIVERY

The following checklist is an important reminder of the valuable information that **MUST** be passed on to the Customer at the time the unit is delivered. Check off each item as you explain it to the Customer.

- ◆ Give the customer his operators manual. Instruct him to be sure to read and completely understand its contents **BEFORE** operating the unit.
- ◆ Explain and review with him the **SAFETY** information in this manual.
- ◆ Explain that regular cleaning and lubrication are required for proper operation and long life. Review with him the lubrication information in this manual.
- ◆ Explain and review with him the service & maintenance information in this manual.
- ◆ Completely fill out the owner's registration, including the customer's signature and return it to the manufacturer.

I acknowledge that the above points were reviewed with me at the time of delivery.

---

CUSTOMER'S SIGNATURE

---

DATE DELIVERED

# 3. INTRODUCTION

---

The **Surface Prep** was designed as an attachment machine for use on skid steer loaders. The information contained in this manual refers only to the Surface Prep Machine. Information regarding the valves used to control oil flow to the Surface Prep attachment can be found in the host machine's manual or in the hi flo installation manual if the host machine is so equipped.

The information contained within is provided to assist you in preparing, adjusting, maintaining and servicing your machine. More importantly, this manual provides an operating plan for safe and proper use of your machine. Major points of safe operation are detailed in the safety chapter of this manual. Refer to the table of contents for an outline of this manual.

Modern machinery has become more sophisticated and, with that in mind, you must read and understand the contents of the manual **COMPLETELY** and become familiar with your new machine before attempting to operate it.

Terms such as “right” and “left” as used in the manual, are as though the reader is sitting in the host machine's operator seat and facing the Surface Prep.

Throughout this manual, information is provided which is set in bold type and introduced by the word **NOTE:** Be sure to read carefully and comply with the message or directive given. Following this information will improve your operating or maintenance efficiency, help you to avoid costly breakdowns or unnecessary damage, and extend the life of your machine.

The Manufacturer and Society of Automotive Engineers have adopted this **SAFETY ALERT SYMBOL** to pinpoint characteristics that, if not properly followed, can create a safety hazard. When you see this symbol in this manual or on the unit itself, you are reminded to **BE ALERT! YOUR SAFETY IS INVOLVED!**



The manufacturer reserves the right to make changes or improvements in the design or construction of any part without the obligation to install such changes on any unit previously delivered.

# 4. SPECIFICATIONS

---

<b>MODEL</b>	<b>STANDARD CUTTING WIDTH</b>
SP-200.....	8 INCHES (200 mm)

MAXIMUM CUTTING WIDTH	8 inches (200 mm)
SIDE-SHIFT TRAVEL	24 inches (610 mm)
NUMBER OF FLAILS	136
WEIGHT	1,000 lbs. (455 kg)

# 5. SAFETY

---

**BEFORE YOU ATTEMPT TO OPERATE THIS EQUIPMENT, READ AND STUDY THE FOLLOWING SAFETY INFORMATION. IN ADDITION, MAKE SURE THAT EVERY INDIVIDUAL WHO OPERATES OR WORKS WITH THIS EQUIPMENT IS FAMILIAR WITH THESE SAFETY PRECAUTIONS.**



The Manufacturer always takes the operator and their safety into consideration when designing machinery. Guards are provided on exposed moving parts for the operator's protection, however, some areas cannot be guarded or shielded in order to assure proper operation. In addition, the operator's manual and decals on the machine itself warn you of further danger and should be read and observed closely.

The **SAFETY ALERT SYMBOL** above means **ATTENTION! BECOME ALERT! YOUR SAFETY IS INVOLVED!** It stresses an attitude of “**HEADS UP**” for safety and can be found throughout this operator's manual and on the unit itself.

**REMEMBER:** The careful operator is the best operator. Most accidents are caused by human error. Certain precautions must be observed to prevent the possibility of injury or damage.



Please read the rules listed below for safe operation **BEFORE** you operate this equipment.

Use of words **CAUTION**, **WARNING**, or **DANGER**, herein and on the machine itself, signal three degrees of hazard.

**CAUTION** is used for general reminders of good safety practices or to direct attention to unsafe practices.

**WARNING** is used to denote a specific potential hazard.

**DANGER** is used to denote the most serious specific potential hazard.



## 5.1 MANDATORY SAFETY SHUTDOWN PROCEDURE

---

Work of any type on machinery is always more dangerous when the machine is operating. **BEFORE** cleaning, lubricating, or servicing this unit, the following **MANDATORY SAFETY SHUTDOWN PROCEDURE** should **ALWAYS** be followed:

1. Move host machine's propulsion control to the neutral position and **idle engine down**.
2. Shut off oil flow to Surface Prep.
3. Position Surface Prep so that it is completely resting on the ground or floor.
4. Engage the host machine's hand brake.
5. Move the host machine's throttle to the slow idle position, shut the Engine off and remove the Ignition Key.

**REMEMBER ALWAYS IDLE ENGINE DOWN BEFORE SHUTTING OFF OIL FLOW.**

**ONLY** when you have taken these precautions can you be sure it is safe to proceed. Failure to follow the above procedures could lead to death or serious bodily injury!

Some diagrams used herein may show Door(s), Guard(s), or Shield(s) open or removed for illustration purposes **ONLY! BE SURE** that all Door(s), Guard(s), and Shield(s) are in their proper position(s) and securely attached **BEFORE** operating the Surface Prep!

Read and observe ALL Safety information and Decals on the host machine and Surface Prep **BEFORE** operating the unit! In addition, familiarize yourself with ALL of the Safety Devices and periodically check that they are functioning properly!

Refer to the **SAFETY** chapter of the host machine's operator manual and observe **ALL** Safety recommendations set forth in that manual!

**CAREFULLY** inspect **ALL** hydraulic hoses and connections on a routine basis;  
**NEVER** use your hand, escaping fluid under pressure can cause serious injury!

**BE SURE** to exercise the **MANDATORY SAFETY SHUT DOWN PROCEDURE BEFORE** proceeding to do any work on the Surface Prep!

**BE SURE** the Surface Prep is properly placed on the ground with the cutting head off the ground, **BEFORE** attempting to work on the cutting wheel.

**BEFORE** transporting the Surface Prep, **BE SURE** to raise the unit completely clear of the ground and turn it off.



**ALWAYS** wear proper clothing and covering when working with or on the Surface Prep.

**ALWAYS** wear safety glasses or face shield while operating the Surface Prep.

**DO NOT** attempt to work on the Surface Prep or host machine with the hydraulics live! **BE SURE** to relieve the hydraulic pressure, by shutting down the engine and moving all control levers to relieve hydraulic pressure **BEFORE** attempting to disconnect any hoses or **BEFORE** proceeding to remove the Surface Prep from the host machine.

**DO NOT** use the Surface Prep to push objects, it can be damaged by contact with solid objects, as well as upset the stability of the host machine!

**REMEMBER!** It is the owner's responsibility for communicating information on the safe use and proper operation and maintenance of this machine!

# 6. OPERATION

---

## 6.1 FOREWORD

The Surface Prep must be attached to a host machine equipped to provide the necessary hydraulics and operational controls. As there are many different host machines available, this manual will only deal with the generic operation of the Surface Prep. Anyone attempting to attach and operate the Surface Prep must first have the knowledge and skill of operating the host machine's controls. Information regarding the host machine's controls and attaching procedure is found in the host machine's Operators Manual or from its Authorized Dealer.

## **6.2 ATTACHING TO AND DETACHING FROM A SKIDSTEER LOADER**

Drive the skidsteer up to the quick attach of the Surface Prep and connect up. Exercise the **MANDATORY SAFETY SHUTDOWN PROCEDURE** before proceeding.

After installing hydraulic quick couplers compatible with your skidsteer to the two 3/4" main hoses, connect them to the hydraulic outlets assuring that the hose connected to the "2" port of the valve goes to the pressure outlet of the skidsteer. Connect the two 1/4" lines to the auxiliary outlets if your skidsteer is equipped with high flow and has five hydraulic lines. Also connect the 3/8" line to the case drain of the skidsteer. (SEE 4 LINE HYDRAULIC SCHEMATIC PAGES 22-23)

For low flow skidsteer and those with just three high flow lines your Surface Prep machine must be equipped with a selector valve. With this you can either run the drum or side shift the head.

When connecting the hoses of a selector valve, the hose in the "C" port of the selector valve must be connected to the pressure outlet of the skidsteer. (SEE 2 LINE HYDRAULIC SCHEMATIC PAGES 24-25)

Detaching is a reversal of this process.

## 6.3 ADJUSTMENTS

One of the most important maintenance items is the proper adjustment of the depth skids.

Adjust the skids with the adjustment screws at the rear of the skids. Using the depth gauge (56192) supplied with the Surface Prep and following the drawing on Page 15. Adjust the skids so they are at least

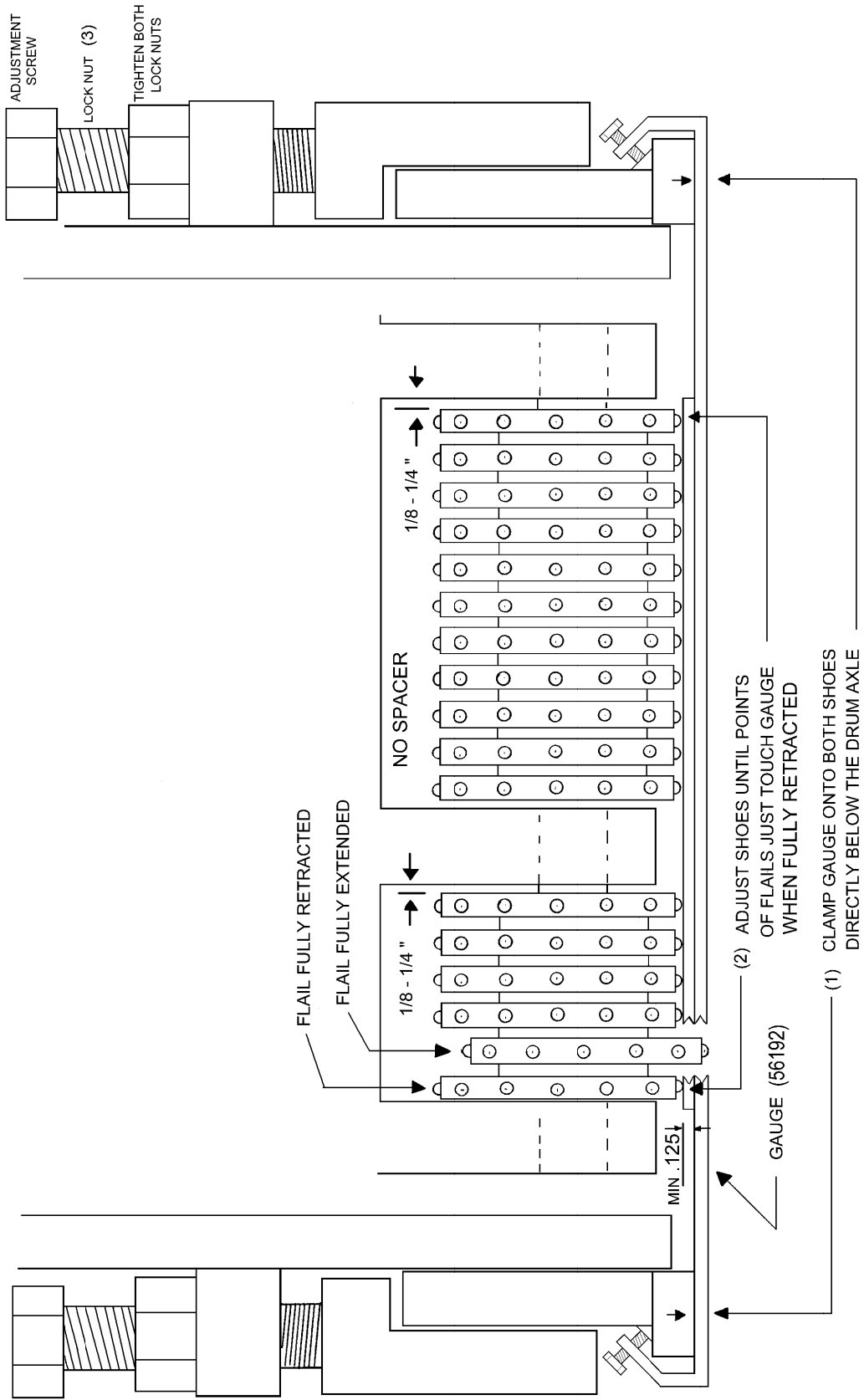
1/8 inch lower than the carbide points on the flails when they are fully retracted against the shaft.

1. Clamp gauge onto both shoes as shown directly below the center line of the drum shaft.
2. Adjust shoes so that flail points just touch gauge when flail is rotated on its shaft.
3. Tighten adjustment screw locknuts.
4. Remove gauge.

This describes the most aggressive setting recommended. If this setting is deeper than needed increase the distance between the gauge and retracted flail.

**NEVER ALLOW THE FLAIL TO BOTTOM OUT  
BETWEEN THE PAVEMENT AND ITS SHAFT  
AS THIS WILL CAUSE RAPID WEAR OF FLAIL  
AND SHAFT AS WELL AS SHAFT BREAKAGE.**

The drum rotation direction is set at the factory to rotate as an up cut; that is if viewed from the motor side, the rotation is clockwise. Some conditions or materials may be removed better if the drum rotation is counterclockwise. This can be changed by switching the two large hoses on the motor.



## 6.4 OPERATING THE SURFACE PREP

After all adjustments and maintenance has been done, drive the machine to the line or surface to be removed. Lower the machine to the pavement. **USE VERY LITTLE DOWN PRESSURE OR PUT THE SKIDSTEER LOADER ARMS IN FLOAT.** Start the hydraulic flow, increase engine to full RPM and start moving forward. Adjust your forward speed as required.

## 7. DAILY MAINTENANCE

---



**CAUTION: NEVER attempt to do any maintenance to the Surface Prep while it is running. Exercise the MANDATORY SAFETY SHUTDOWN PROCEDURE BEFORE proceeding.**

**NOTE:** Careful attention to the daily maintenance routines will go a long way toward ensuring efficient operation.

1. At the start of each day, lubricate the grease fittings at each side, front and back of the Surface Prep. Standard shop gun grease will suffice.
2. Using the correct size wrenches, retighten any loose hardware.
3. Inspect for any loose hydraulic fittings or damaged hoses; retighten or replace as required.
4. Make sure all flails are free to rotate and move.
5. Check for flail wear replace when necessary.
6. Make sure skids are properly adjusted (See Section 6.3).

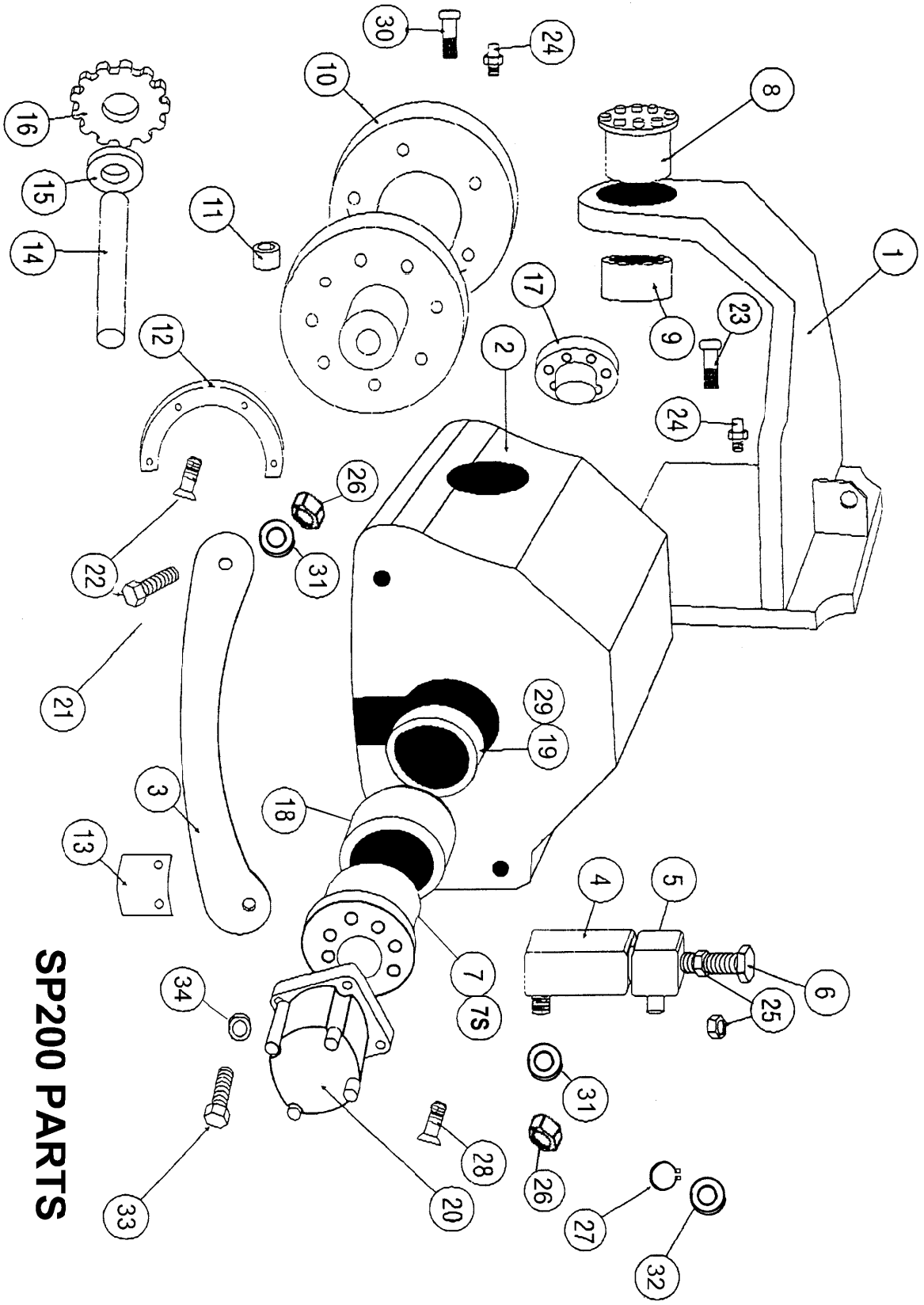




**WARNING: NEVER** use your hands to check for hydraulic Leaks. Escaping fluid under pressure can cause serious injury! If injured by escaping fluid, see a doctor at once. If proper Medical treatment is **NOT** administered **IMMEDIATELY** Serious infection or reaction can develop!

## 7.1 CHANGING FLAILS AND/OR FLAIL SHAFTS

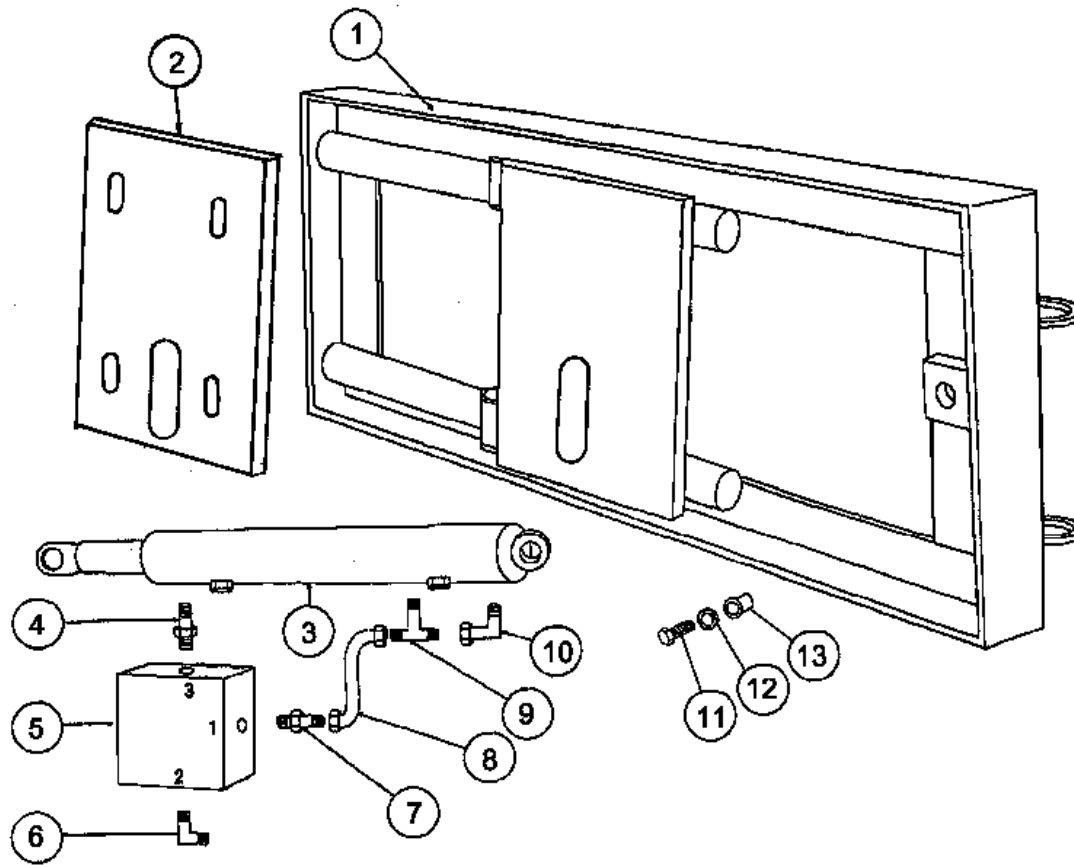
1. Remove 4-12 mm bolts holding motor to bearing hub. Remove motor, leave hose attached.
2. Remove the 2 lower 12 mm flat head screws in the bearing hub and remove the plate they were screwed to. This will provide access to the “U” shaped cutout in the flange of the bearing hub and allows for the 10 - 10 mm flat head screws to be removed from the shaft retainer plates.
3. Remove the front bolt from the L.H. skid to allow it to swing down. The flail shafts can now be pushed out. Installation is a reversal of above.
4. When installing the flails use the spacer washers to alternate the flail location from one shaft to another to allow full pattern coverage. There should be a spacer washer between each flail. There should be 1/8 to 1/4 inch clearance in each space. See page 15.



**SP200 PARTS**

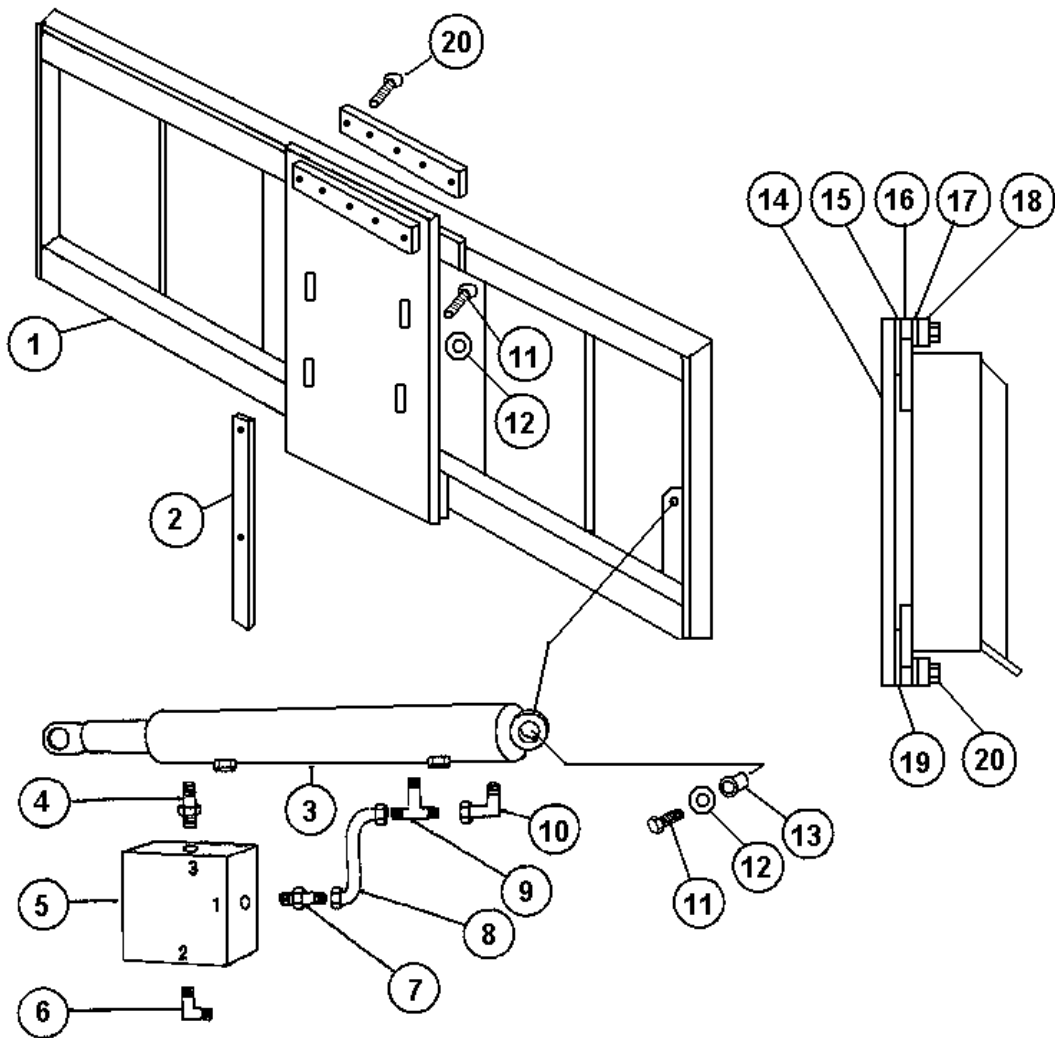
## PARTS LIST FOR SP200

4	56198	Bracket Depth Pivot	2
5	56200	Boss Adjusting Threaded	2
6	56199	Bolt Depth Adjusting	2
7	56209	Hub Bearing/Seal Motor Side	1
7S	56475	Shim	AR
8	56207	Boss Pivot	2
9	56208	Bushing Pivot	2
10	60013	Drum Assy Incd's Items 10,11,12,14,15,16&2	1
10	56195	Drum Weldment Flail Type SP200	1
10	56416	Drum Weldment Pic Type SP 200	1
11	56204	Bushing Shaft	32
12	56206	Retainer Shaft	2
13	56263	Plate Cover	1
14	56205	Shaft	8
15	54787	Spacer	120
16	54785	Flail Cutter Wheel	120
17	56211	Hub Bearing/Seal Off Side	1
18	56201	Bearing	2
19	56202	Seal	2
20	56107	Motor 4.48 CI For 17to22 GPM Flail Drum	1
20	56470	Motor 6.41 CI For 22to28 GPM Flail Drum	1
20	56644	Motor 69.23 CI For Pic Drum	1
20	55014	Seal Kit Motor 56107 & 56470	AR
20	56001	Seal Kit Motor 56644	AR
21	350A-20055	HHCS	2
22	350E-10025	Flathead Socket Capscrew	10
23	350D-08030	SHCS	8
24	29A-02	Grease Fitting	4
25	330A-20	M20 Locknut	2
26	330C-20	M20 Nylok Nut	4
27	56210	Snap Ring	2
28	350E-12040	Flathead Socket Capscrew	8
29	56203	Snap Ring	2
30	350D-10030	SHCS	16
31	14C-12	3/4 Flat Washer	6
32	14C-14	Washer 7/8"	2
33	350A-12040	HHCS	4
34	14A-08	Washer	4
35	56192	Gauge Flail Adj (not shown)	



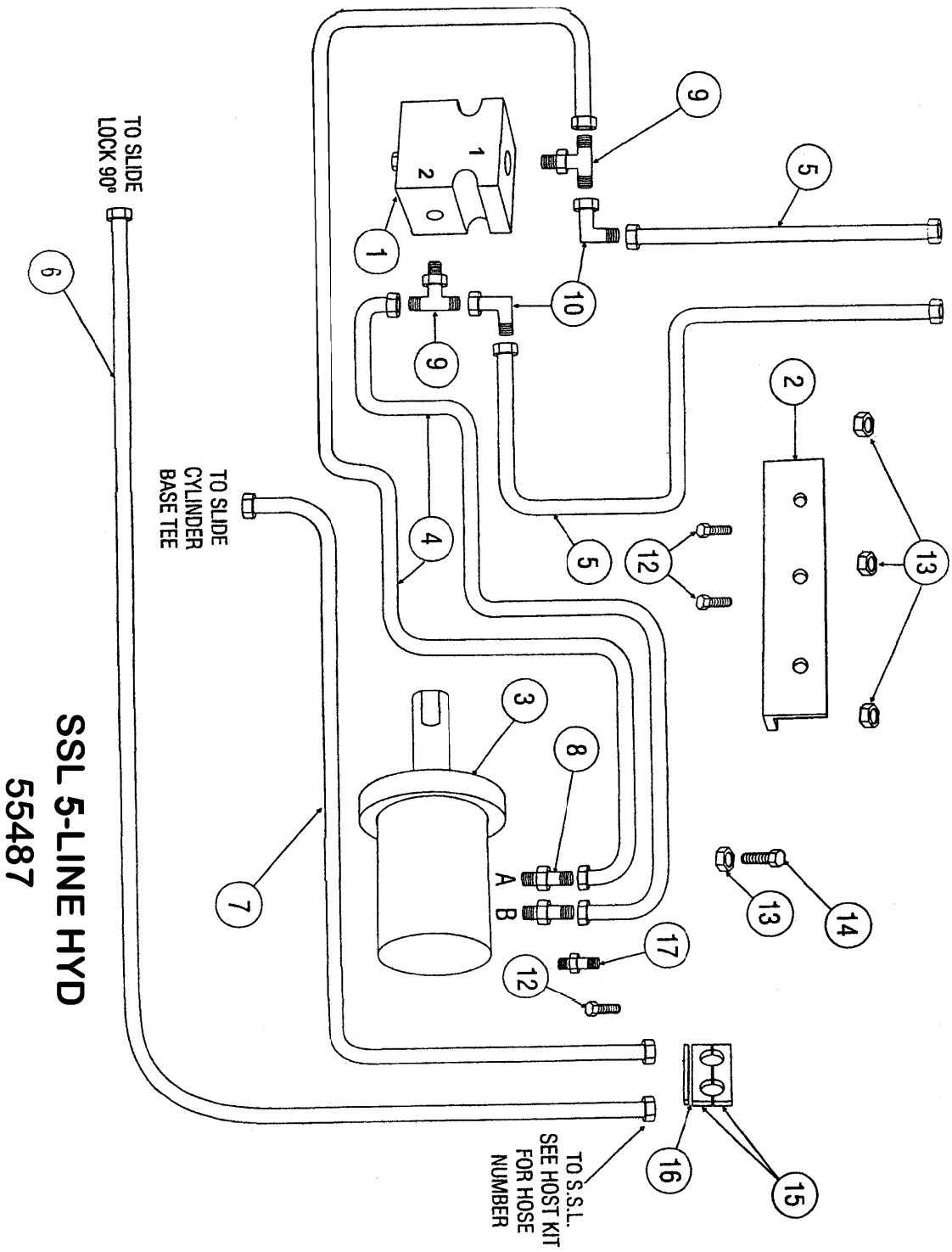
**SP 200 CROSSLIDE  
UP TO S/N SP1034**





**SP 200 CROSSLIDE  
S/N SP1034 AND UP**

ITEM	PART NUMBER	DESCRIPTION	QUANTITY
1	56722	Crossslide Weldment Assy	1
2	57604	Spacer Bar	2
3	56745	Hydraulic Cylinder 26"	1
4	111K-0604	Adapter SAEM/NPTM Str	1
5	52981	Lock Valve	1
6	111B-0406	Adapter JICM/SAEM 90 Deg	1
7	111E-0406	Adapter JICM/SAEM Str	1
8	54114	Hose 1/4x25"	1
9	110Y-0404	Adapter JICM/NPTM Tee	1
10	112B-04	Adapter JICM/JICF 90 Deg	1
11	50B-1216	HHCS 3/4-10 x 2" Gd 8	12
12	14C-12	Washer Flat SAE	12
13	54991	Bushing	2
14	57603	Slide Plate SP 200	1
15	56931	Wear Strip Upper Front	1
16	56928	Spacer Bar	2
17	56929	Wear Strip Rear	2
18	56927	Clamp Bar	2
19	56930	Wear Strip Lower Front	1
20	50A-08 20	HHCS 1/2-13 x 2 1/2"	10

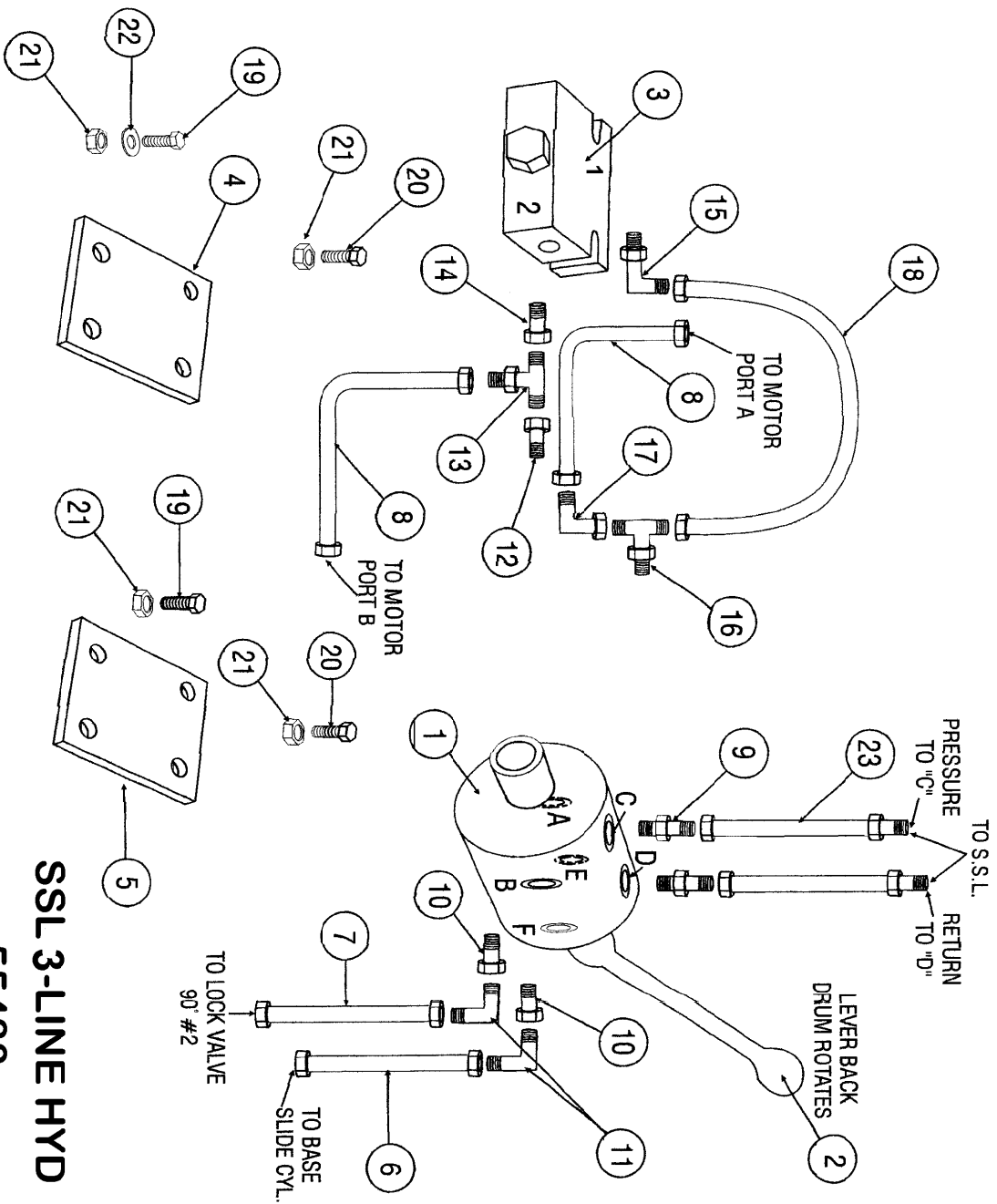




## 5 LINE HYD PARTS LIST 55487

ITEM	P/N	DESCRIPTION	QTY
1	54545	Cartridge for 55344	1
1	55344	Overrunning Valve	1
1	56049	Seal Kit O.R. Valve	1
2	55463	O.R. Valve Bracket	1
3		Motor - (See Motor Size Table)	1
4	54723	Hose 3/4" x 53" Motor	2
5*		Hose 3/4" TO S.S.L.	2*
6*		Hose 1/4" Slide	1*
7*		CylinderHose 1/4" Slide Cylinder	1*
8	111b-1212	Hyd. Adapter Motor	2
9	111C-1212	Adapter Tee JICM / SAEM	2
10	112B-12	Adapter 90° JICF / JICM	2
11	50A-0516	5/16-18 x 2 HHCS	1
12	50A-0522	5/16-18 x 2-3/4 HHCS	2
13	30C-05	5/16-18 Nylock Nut	5
14	50A-0510	5/16-18 x 1-1/4 HHCS	2
15	54047	Hose Clamp 1/4 (Pair)	1
16	54048	Hose Clamp Plate	1
17	111G-0604	Hyd. Adapter Case	1

\* HOSES WILL DEPEND ON WHICH S.S.L.  
THE SURFACE PREP IS ON. SEE HOST KIT FOR THAT LOADER.



**SSL 3-LINE HYD**

**55488**

## 3 LINE HYD PARTS LIST 55488

ITEM	P/N	DESCRIPTION	QTY
1	55472	Selector Valve	1
1	56050	Seal Kit Selector Valve	1
2	55483	Lever	1
3	55344	Overrunning Valve	1
3	56049	Seal Kit O.R. Valve	1
3	54545	Cartridge for 55344	1
4	55481	O.R. Valve Bracket	1
5	55480	Selector Valve Bracket	1
6	54026	Hose 1/4 x 15"	1
7	55482	Hose 1/4 x 35"	1
8	54723	Hose 3/4 x 53" Motor Pressure / Return	2
9	110G-1216	Adapter Str JICM/NPTM	2
10	115B-1608	Adapter Reducer NPTF/NPTM	2
11	110R-0408	Adapter 90° JICM / NPTM	2
12	115B-1612	Adapter Reducer NPTF/NPTM	1
13	110AH-1212	Adapter Tee JICM/NPTM	1
14	111V-12	Adapter Str SAEM/NPTF	1
15	111B-1212	Adapter 90° JICM/SAEM	1
16	110Y-1216	Adapter Tee JICM/NPTM	1
17	112B-12	Adapter 90° JICM/JICF	1
18	55479	Tube Assy 3/4" x 180°	1
19	50A-0522	5/16-18 x 2-3/4 HHCS	4
20	50A-0510	5/16-18 x 1-1/4 HHCS	4
21	30C-05	5/16-18 Nylock Nut	8
22	14C-05	5/16 Flat Washer	2
23*		Hose 3/4" TO SSL	2

\* HOSES WILL DEPEND ON WHICH S.S.L.  
THE SURFACE PREP IS ON. SEE HOST KIT FOR THAT LOADER.

**SP200 HOST KITS**

**55465X BOBCAT HI FLO SP200 HOST KIT**

	<b>Part #</b>	<b>Description</b>	<b>Qty</b>	<b>Cost</b>	<b>Total Cost</b>
	55900	3/4 x 72" Hose	2	\$20.11	\$40.22
	55174	1/4 x 106" Hose	1	\$7.94	\$7.94
	55476	1/4 x 125" Hose	1	\$8.70	\$8.70
	54170	3/8 x 131" Case Drain Hose	1	\$10.10	\$10.10
	111E-0608	Case Drain QC Adapter	1	\$0.72	\$0.72
	111E-1212	Adapter	2	\$1.13	\$2.26
	111E-0408	Adapter	2	\$1.38	\$2.76
					\$72.70

**55466X CASE-GEHL-MUSTANG-TRAK-THOMAS - SP200 HOST KIT**

	<b>Part #</b>	<b>Description</b>	<b>Qty</b>	<b>Cost</b>	<b>Total Cost</b>
	55524	3/4 x 100" Hose	2	\$27.79	\$55.58
	55477	1/4 x 62" Hose	1	\$5.63	\$5.63
	55478	1/4 x 80" Hose	1	\$6.47	\$6.47
	54822	3/8 x 157" Case Drain Hose	1	\$11.30	\$11.30
	111E-1212	Adapter	2	\$1.13	\$2.26
	111E-0408	Adapter	2	\$1.38	\$2.76
	111E-0610	(Case)	1	\$0.72	\$0.72
	111E-0608	(Gehl, Mustang)	1	\$0.72	\$0.72
	11OG-0608	(Thomas)	1	\$0.72	\$0.72
					\$86.16

**55469XH JCB HI FLO SP200 HOST KIT**

	<b>Part #</b>	<b>Description</b>	<b>Qty</b>	<b>Cost</b>	<b>Total Cost</b>
	55524	3/4 x 100" Hose	2	\$27.79	\$55.58
	55174	1/4 x 106" Hose	1	\$7.94	\$7.94
	55476	1/4 x 125" Hose	1	\$8.70	\$8.70
	54822	3/8 x 157" Case Drain Hose	1	\$11.30	\$11.30
	40040	Adapter	2	\$8.97	\$17.94
	111Q-0406	Adapter	2	\$3.50	\$7.00
	111Q-0608	Case Drain QC Adapter	1	\$3.41	\$6.82
					\$115.28

**55469L JCB LO FLO HOST KIT SP200**

	<b>Part #</b>	<b>Description</b>	<b>Qty</b>	<b>Cost</b>	<b>Total Cost</b>
	55524	3/4 x 100" Hose	2	\$27.79	\$55.58
	111Q-1212	Adapter	2	\$1.85	\$3.70
					\$59.28

**SP200 HOST KITS**

**55470 NEW HOLLAND - JOHN DEERE  
SP200 HOST KIT**

	<b>Part #</b>	<b>Description</b>	<b>Qty</b>	<b>Cost</b>	<b>Total Cost</b>
	55900	3/4 x 72" Hose	2	\$20.11	\$40.22
	54822	3/8 x 157" Case Drain Hose	1	\$11.30	\$11.30
	111E-1212	Adapter	2	\$1.13	\$2.26
	111E-0608	Case Drain QC Adapter	1	\$0.72	\$0.72
					\$54.50

**55495 LOW FLO (2-LINE) SP 200 HOST KIT**

	<b>Part #</b>	<b>Description</b>	<b>Qty</b>	<b>Cost</b>	<b>Total Cost</b>
	55900	3/4 x 72" Hose	2	\$20.11	\$40.22
	111E-1212	Adapter	2	\$1.13	\$2.26
					\$42.48

**55665X CAT 248 SP200 HOST KIT**

	<b>Part #</b>	<b>Description</b>	<b>Qty</b>	<b>Cost</b>	<b>Total Cost</b>
	55902	3/4 x 72" Hose	2	\$56.04	\$112.08
	55486	1/4 x 90" Hose	1	\$9.02	\$9.02
	55174	1/4 x 106" Hose	1	\$7.94	\$7.94
	54170	3/8 x 131" Case Hose	1	\$9.78	\$9.78
	111E-1212	Adapter	2	\$1.13	\$2.26
	111E-0608	Adapter	1	\$0.72	\$0.72
	111E-0408	Adapter	2	\$1.38	\$2.76
					\$144.56