

SG SERIES

**SLOT CUTTER
PRODUCTS**

Operating and Maintenance Manual



TABLE OF CONTENTS

1. PRODUCT WARRANTY.....	3
2. CHECKLIST Dealer's File Copy.....	4
Customer's File Copy.....	5
3. INTRODUCTION.....	6
4. SPECIFICATIONS.....	7
5. SAFETY.....	8
5.1 Mandatory Safety shutdown Procedure.....	9-10
6. OPERATION.....	11
6.1 Forward.....	11
6.2 Attaching to and Detaching from a Host Machine.....	11
6.2.1 Skidsteer Loader.....	12
6.2.2. Loader Backhoe & Compact Excavator.....	12
6.3 Preparing to Cut	12
6.4 Starting the Cut.....	13
6.5 Advancing the Cut.....	13
6.6 Ending the Cut.....	13
7. DAILY MAINTENANCE.....	14
7.1 Pic Removal and Replacement.....	15
7.2 Removal.....	15
7.3 Replacement.....	16
7.4 Changing a Wheel.....	17
8. PARTS	
SSG Drawing & Parts List.....	18-19
SSL 4-Line Hyd. Drawing & Parts List.....	20-21
SSL 2-Line Hyd. Drawing & Parts List.....	22-23
Host Kits.....	24-25
BSG Drawing & Parts List.....	26-27
Danfoss Motor Drawing & Parts List.....	28
Eaton 6K Motor Drawing & Parts List.....	29

1. PRODUCT WARRANTY



PURPOSE OF POLICY

The policy covers correction of defects in workmanship and/or materials called to the attention of Coneqtec/Universal and is subject to all conditions of the warranty.

STATEMENT OF WARRANTY

Coneqtec/Universal warrants its products for up to one year from the purchase date when correctly used under normal operating conditions. Coneqtec/Universal makes no other warranty expressed or implied.

This warranty shall not apply to any products that have been altered, changed or repaired in any manner whatsoever. Nor shall it apply to any product which has been subject to misuse, negligence or accident.

The exclusive and sole remedy for breach of contract (including breach of any express or implied warranty) shall be limited to repair, modification or replacement at the sole discretion of Coneqtec/Universal, of non-conforming products as aforesaid. Coneqtec/Universal shall not in any event be liable to anyone. Faulty or suspect parts must be returned to Coneqtec/Universal at user's cost.

GENERAL

Coneqtec/Universal reserves the right to make changes or improvements in design or construction of any part without incurring the obligation to install such changes on any unit previously delivered.

WARRANTY PARTS & LABOR PROCEDURES

WARRANTY PARTS & LABOR POLICY

Warranty parts credits will be allowed for the replacement parts that prove in the company's judgment to be defective in material or workmanship on machines sold to the original purchaser. No consideration whatsoever will be made on used, second-hand, altered or rebuilt machinery.

Only genuine Coneqtec/Universal parts will be used in correction of defective products. Any parts used that are not of Coneqtec/Universal origin will not be warranted unless prior Coneqtec/Universal approval has been granted.

Warranty labor will be paid at \$40 per hour based on flat rates established by Coneqtec/Universal; however, no mileage or mileage time will be reimbursed.

Warranty will not be paid if the dealer is not capable of doing the testing that is required by Coneqtec/Universal (this pertains to hydraulic testing and the use of pressure testing equipment) to determine the location or source of the problem.

OWNER RESPONSIBILITY

Every owner is responsible for the machine's proper use and maintenance. Parts that are simply worn out through normal wear and tear, or abused or damaged due to lack of maintenance or adjustment are not subject for warranty consideration.

DEALER RESPONSIBILITY

Coneqtec/Universal requires that the dealership has a service center that is staffed and has the ability to setup and do pre-delivery on all units prior to delivery and to do testing that is required by Coneqtec/Universal in the event that there is a problem with the machine.

It is also required that the dealers instruct the customer on the proper operation and safety procedures.

WARRANTY PROCEDURE

Warranty will not be considered on the following unless it can be proved there is negligence in workmanship or materials.

Wear items such as pics, pic blocks, blades and cutters.

Hoses that have been worn or damaged by use.

PROCEDURE FOR CLAIM

Prior to starting any warranty work please call Coneqtec/Universal for approval and notification of flat rate allowances. All warranty claims must be received within thirty days of warranty repair in order to be a valid warranty claim. Otherwise warranty claim will be denied. A copy of the parts invoices and shop work orders must be submitted with the warranty form, and the form must be filled out completely with all customer and machine information. The warranty/RGA form with parts should then be sent to the designated location stated on form. Coneqtec/Universal will pay only standard Fed Ex or LTL truck freight on warranty items.

All warranty credits will be applied to the dealer's account.

Revised 11/1/01

2. CHECKLIST

DEALER'S FILE COPY

2.1 PRE-DELIVERY

After the Slot Cutter has been completely setup and attached to the host machine, inspect the following. Check off each item after the prescribed action is taken.

Check that:

- ◆ No parts of the unit have been damaged in shipment. Check for things such as dents and loose or missing parts; correct or replace components as required.
- ◆ All bolts and fasteners are in place and tightly secured.
- ◆ All grease fittings have been properly lubricated; see lubrication information in this manual.
- ◆ All decals are in place and securely attached.
- ◆ The serial number of your unit is recorded in the space provided on this page.
- ◆ Then, test run the unit while checking that all components are operating correctly.

I acknowledge that the procedures were performed on this unit as outlined above

DEALERSHIP NAME

DEALER REPRESENTATIVE'S NAME

DATE CHECKLIST FILLED OUT

2.2 DELIVERY

The following checklist is an important reminder of the valuable information that **MUST** be passed on to the Customer at the time the unit is delivered. Check off each item as you explain it to the Customer.

- ◆ Give the customer his operators manual. Instruct him to be sure to read and completely understand its contents **BEFORE** operating the unit.
- ◆ Explain and review with him the **SAFETY** information in this manual.
- ◆ Explain that regular cleaning and lubrication are required for proper operation and long life. Review with him the lubrication information in this manual.
- ◆ Explain and review with him the service & maintenance information in this manual.
- ◆ Completely fill out the owner's registration, including the customer's signature and return it to the manufacturer.

I acknowledge that the above points were reviewed with me at the time of delivery.

CUSTOMER'S SIGNATURE

DATE DELIVERED

2. CHECKLIST

CUSTOMER'S FILE COPY

2.1 PRE-DELIVERY

After the Slot Cutter has been completely setup and attached to the host machine, inspect the following. Check off each item after the prescribed action is taken.

Check that:

- ◆ No parts of the unit have been damaged in shipment. Check for things such as dents and loose or missing parts; correct or replace components as required.
- ◆ All bolts and fasteners are in place and tightly secured.
- ◆ All grease fittings have been properly lubricated; see lubrication information in this manual.
- ◆ All decals are in place and securely attached.
- ◆ The serial number of your unit is recorded in the space provided on this page.
- ◆ Then, test run the unit while checking that all components are operating correctly.

I acknowledge that the procedures were performed on this unit as outlined above

DEALERSHIP NAME

DEALER REPRESENTATIVE'S NAME

DATE CHECKLIST FILLED OUT

SERIAL NUMBER

2.2 DELIVERY

The following checklist is an important reminder of the valuable information that **MUST** be passed on to the Customer at the time the unit is delivered. Check off each item as you explain it to the Customer.

- ◆ Give the customer his operators manual. Instruct him to be sure to read and completely understand its contents **BEFORE** operating the unit.
- ◆ Explain and review with him the **SAFETY** information in this manual.
- ◆ Explain that regular cleaning and lubrication are required for proper operation and long life. Review with him the lubrication information in this manual.
- ◆ Explain and review with him the service & maintenance information in this manual.
- ◆ Completely fill out the owner's registration, including the customer's signature and return it to the manufacturer.

I acknowledge that the above points were reviewed with me at the time of delivery.

CUSTOMER'S SIGNATURE

DATE DELIVERED

3. INTRODUCTION

The **SSG & BSG SERIES SLOT CUTTER** was designed as an attachment machine for use on host machines such as skid steer loaders, loader backhoes, and compact excavators. The information contained in this manual refers only to the Slot Cutter Machine. Information regarding the valve used to control oil flow to the Slot Cutter attachment can be found in the host machine's manual or the power pack installation manual if the host machine is so equipped.

The information contained within is provided to assist you in preparing, adjusting, maintaining and servicing your machine. More importantly, this manual provides an operating plan for safe and proper use of your machine. Major points of safe operation are detailed in the safety chapter of this manual. Refer to the table of contents for an outline of this manual.

Modern machinery has become more sophisticated and, with that in mind, you must read and understand the contents of the manual **COMPLETELY** and become familiar with your new machine before attempting to operate it.

Terms such as "right" and "left" as used in the manual, are as though the reader is sitting in the host machine's operator seat and facing the slot cutter.

Throughout this manual, information is provided which is set in bold type and introduced by the word **NOTE**: Be sure to read carefully and comply with the message or directive given. Following this information will improve your operating or maintenance efficiency, help you to avoid costly breakdowns or unnecessary damage, and extend the life of your machine.

The Manufacturer and Society of Automotive Engineers have adopted this **SAFETY ALERT SYMBOL** to pinpoint characteristics that, if not properly followed, can create a safety hazard. When you see this symbol in this manual or on the unit itself, you are reminded to **BE ALERT! YOUR SAFETY IS INVOLVED!**



The manufacturer reserves the right to make changes or improvements in the design or construction of any part without the obligation to install such changes on any unit previously delivered.

4. SPECIFICATIONS

SG SERIES

MODEL	STANDARD CUTTING WIDTH
SSG-7.....	3 INCHES (76 mm)
SSG-7 (Optional).....	.5 INCHES (127 mm)
SSG-9	3 INCHES (76 mm)
SSG-9 (Optional)	5 INCHES (127 mm)
BSG-7.....	3 INCHES (76 mm)
BSG-7 (Optional).....	5 INCHES (127 mm)
BSG-9	3 INCHES (76mm)
BSG-9 (Optional)	3 INCHES (127 mm)

MAXIMUM CUTTING DEPTH	7 inches (178 mm)
OPTIONAL SIDE-SHIFT TRAVEL (SSG-7 only)	24 inches (610 mm)
WEIGHT*	
SG-7 (base head unit)	500 lbs. (227 kg)
CROSSLIDE PLATE (S.S. loader hitch)	400 lbs. (182 kg)
MOUNTING CRADLE (loader backhoe, or excavator)	85 lbs. (39 kg)

* Weights are for hydraulic slot cutters equipped for use on skidsteer loaders, backhoe loaders, and compact excavators, and are approximate due to optional equipment.

5. SAFETY

BEFORE YOU ATTEMPT TO OPERATE THIS EQUIPMENT, READ AND STUDY THE FOLLOWING SAFETY INFORMATION. IN ADDITION, MAKE SURE THAT EVERY INDIVIDUAL WHO OPERATES OR WORKS WITH THIS EQUIPMENT IS FAMILIAR WITH THESE SAFETY PRECAUTIONS.



The Manufacturer always takes the operator and their safety into consideration when designing machinery. Guards are provided on exposed moving parts for the operator's protection, however, some areas cannot be guarded or shielded in order to assure proper operation. In addition, the operator's manual and decals on the machine itself warn you of further danger and should be read and observed closely.

The **SAFETY ALERT SYMBOL** above means **ATTENTION! BECOME ALERT! YOUR SAFETY IS INVOLVED!** It stresses an attitude of “**HEADS UP**” for safety and can be found throughout this operator's manual and on the unit itself.

REMEMBER: The careful operator is the best operator. Most accidents are caused by human error. Certain precautions must be observed to prevent the possibility of injury or damage.

Please read the rules listed below for safe operation **BEFORE** you operate this equipment.

Use of the words **CAUTION**, **WARNING**, or **DANGER** herein and on the machine itself signal three degrees of hazard:

CAUTION is used for general reminders of good safety practices or to direct attention to unsafe practices.

WARNING is used to denote a specific potential hazard.

DANGER is used to denote the most serious specific potential hazard.

5.1 MANDATORY SAFETY SHUTDOWN PROCEDURE

Work of any type on machinery is always more dangerous when the machine is operating. **BEFORE** cleaning, lubricating, or servicing this unit, the following **MANDATORY SAFETY SHUTDOWN PROCEDURE** should **ALWAYS** be followed:

- 1 Move host machine's propulsion control to the neutral position and **idle engine down**.
2. Shut off Slot Cutter.
3. Position Cutter so that it is completely resting on the ground or floor.
4. Engage the host machine's hand brake, or parking brake.
5. With the host machine's throttle to the slow idle position, shut the Engine off and remove the Ignition Key.
6. Relieve hydraulic pressure by moving the Hi-flow and cylinder control levers in both directions

REMEMBER ALWAYS IDLE ENGINE DOWN BEFORE SHUTTING OFF OIL FLOW.

ONLY when you have taken these precautions can you be sure it is safe to proceed. Failure to follow the above procedures could lead to death or serious bodily injury!

Some diagrams used herein may show Door(s), Guard(s), or Shield(s) open or removed for illustration purposes **ONLY! BE SURE** that all Door(s), Guard(s), and Shield(s) are in their proper position(s) and securely attached **BEFORE** operating the Cutter!

Read and observe **ALL** Safety information and decals on the host machine and Cutter **BEFORE** operating the unit! In addition, familiarize yourself with **ALL** of the safety devices and periodically check that they are functioning properly!

Refer to the **SAFETY** chapter of the host machine's operator manual and observe **ALL** Safety recommendations set forth in that manual!

CAREFULLY inspect **ALL** hydraulic hoses and connections on a routine basis; **NEVER** use your hand, escaping fluid under pressure can cause serious injury!



BE SURE to exercise the **MANDATORY SAFETY SHUT DOWN PROCEDURE BEFORE** proceeding to do any work on the Cutter!

BE SURE the Cutter is properly placed in the “service position” and resting on the ground **BEFORE** attempting to work on the machine.

BEFORE transporting the Cutter, **BE SURE** to raise the unit completely clear of the ground and turn it off.

When replacing pics, **BE SURE** to use only a soft or lead headed hammer when inserting the pics into the holders.

ALWAYS wear safety glasses with side shields when striking metal against metal! In addition, it is recommended that a softer (non-chippable) material be used to cushion the blow. Failure to heed could result in serious injury to the eye (s) or other part (s) of the body!

ALWAYS wear proper clothing and covering when working with or on the Cutter.

DO NOT attempt to move the cutter sideways while it is on the ground!

DO NOT attempt to work on the cutter or host machine with the hydraulics live! **BE SURE** to relieve the hydraulic pressure by shutting down the engine and moving all control levers **BEFORE** attempting to disconnect any hoses or **BEFORE** proceeding to remove the cutter from the host machine.

DO NOT treat the cutter like a bucket. It can be damaged by contact with solid objects as well as upset the stability of the host machine!

DO NOT hit the pics with a steel hammer as this could cause steel chips to fly, causing injury to the eyes or face.

REMEMBER! It is the owner’s responsibility to communicate information regarding the safe use and proper operation and maintenance to any user of this machine!

6. OPERATION

6.1 FOREWORD

The Cutter must be attached to a host machine equipped to provide the necessary hydraulics and operational controls. As there are many different host machines available, this manual will only deal with the generic operation of the Cutter. Anyone attempting to attach and operate the Cutter must first have the knowledge and skill of operating the host machine's controls. Information regarding the host machine's controls and attaching procedure is found in the host machine's Operators Manual or from its Authorized Dealer.

6.2 ATTACHING TO AND DETACHING FROM A HOST MACHINE

Drive the skidsteer up to the quick attach of the slot cutter and connect up. Exercise the **MANDATORY SAFETY SHUTDOWN PROCEDURE** before proceeding. After installing hydraulic quick couplers compatible with your skidsteer to the hydraulic hoses of the slot cutter, connect them to the hydraulic outlet as follows:

1. If your skidsteer has five lines i.e. (2 high flow , 2 auxiliary, and 1 case drain):

The 3/4" hose attached to the # "2" port of the overrunning valve must be connected to the pressure outlet of the skidsteer's high flow. The 3/4" hose attached to the # "1" port must be connected to the return outlet. The two 1/4" hoses must be connected to the skidsteer's auxiliary outlets. The 3/8" case drain line must be connected to the skidsteer's case drain outlet.

2. If your skidsteer has 3 lines i.e. (2 high flow lines, and 1 case drain):

The 3/4" hose attached to the "C" port of the selector valve must be connected to the pressure outlet of the skidsteer, and the 3/4" hose attached to the "D" port of the selector valve to the return outlet. The 3/8" case drain line must be attached to the skidsteer's case drain outlet.

3. On slot cutters on standard flow skidsteer's without a case drain, connect as per "2" but omit the case drain connection.

6.2.1 SKIDSTEER LOADER

Drive the skidsteer up to the quick attach of the Cutter and connect up. Exercise the **MANDATORY SAFETY SHUTDOWN PROCEDURE** before proceeding. After installing hydraulic quick couplers compatible with those on the skid steer to the two main motor hoses, connect them to the hydraulic outlets, assuring that the hose connected to the #2 or “C” port of the valve goes to the pressure outlet.

6.2.2 LOADER BACKHOE & COMPACT EXCAVATOR

After checking to make sure your slot cutter has the proper coupler assembly, position the backhoe/excavator to pick up the cutter with the quick coupler, if the unit is so equipped, or to pin to the boom. Exercise the **MANDATORY SAFETY SHUTDOWN PROCEDURE** before proceeding. After installing the hydraulic quick couplers and hoses compatible with your loader backhoe/excavator hydraulic couplers, connect them to the hydraulic outlets, assuring that the hose connected to the #2 port of the motor goes to the pressure outlet of the host machine.

The BSG-7 cutter is intended for use on loader backhoe’s and small to medium sized excavators up to 30,000 gvw (13.608 kg), and auxiliary hydraulic flows from 16 through 26 gpm (60.6-98.4 l/m). It is recommended that the Coneqtec auxiliary hydraulic wet kit be used on your loader backhoe and adjust the hydraulic flow to the motor’s recommended flow.

6.3 PREPARING TO CUT

Determine the required depth of cut and left to right position of the cutter in regards to the host machine.

When it is safe to do so, start the host machine’s engine, and ensure that the cutter wheel is not touching the ground. Turn on the cutter, and check the cutter rotation. The teeth at the bottom of the wheel must be moving in the same direction that the cutter travels over the material to be cut. If the wheel rotates incorrectly, correct the cutter installation before attempting to cut. In skidsteer operation, only forward travel should be used. In backhoe/excavator operation, only pulling cutter to host machine direction should be used.

Increase engine rpm, with the wheel turning. You can now make necessary adjustments to the left and right position of the cutter.

A hydraulic cylinder holds the cutter in position on the mounting plate slide. Actuate the cylinder to adjust the desired left/right position.

Note: Backhoe installations do not include a left/right slide function.

6.4 STARTING THE CUT

Position the cutter over the desired starting place. With the cutter turned on, the depth shoe at “0” or resting on the starting area and the host machine’s engine at full rpm, slowly rotate the cutter into the surface to be cut. Continue to increase cutting depth by rolling the dump forward cylinder (on a skidsteer or front end loader), or by rolling up the bucket cylinder (on backhoe/excavator). For example, the front wheels of the skidsteer may be raised 2-3 inches (50-75 mm) off the cutting surface. Maximum depth of each cut is determined by the type of material being cut, the weight and hydraulic horsepower of the host machine, and the width of cutter being used.

6.5 ADVANCING THE CUT

Advance the cutter in the direction the wheel pics are traveling in the cut. If the cutter wheel stalls, you have been feeding the cutter into the cut too fast or cutting too deep. Back out of the cut until the wheel restarts, and then advance again. If the cutter tends to ride up out of the cut, use the procedure outlined in the above to keep the cutter skid on the surface to be cut.

DO NOT side shift the cutter while the wheel is in the cut. The wheel will not cut in a side to side direction. Depth controls may be actuated while the wheel is in the cut.

6.6 ENDING THE CUT

Stop advancing the cutter and raise wheel out of the cut. If you do not wish to start a new cut, **idle host machine engine**, and turn the cutter off. **DO NOT** transport the cutter while it is running.



CAUTION: When using slot cutters, periodic observation must be made of the hydraulic oil temperature indicator on the host machine. Hydraulic oil may over-heat, depending on ambient temperature and duty cycle of the machine. If indicator comes on, shut off slot cutter, and allow skidsteer loader to idle until the hydraulic temperature falls below 180°F (82°C).

Damage to machine may occur if these instructions are not followed.

7. DAILY MAINTENANCE



CAUTION: NEVER attempt to do any maintenance to the Cutter while it is running. Exercise the **MANDATORY SAFETY SHUTDOWN PROCEDURE BEFORE** proceeding.

NOTE: Careful attention to the daily maintenance routines will go a long way toward ensuring efficient operation.

1. At the start of each day, lubricate the bearing grease fittings at the end of the axle shaft on the right hand side of the cutter housing. Standard shop gun grease will suffice.
2. Check crossslide rods (only on S.S. hitch) for lubrication. Clean away any dust or dirt, and apply oil to these areas.
3. Using the correct size wrenches, retighten any loose hardware. **BE SURE** to check motor and bearing mounting bolts regularly.
4. Inspect for any loose hydraulic fittings of damaged hoses; retighten or replace as required.
5. At least twice a day, check all pics for freedom of rotation and wear. Replace all pics that are not rotating freely or are badly worn. Follow the procedure outlined under pic removal and replacement.



WARNING: NEVER use your hands to check for hydraulic leaks. Escaping fluid under pressure can cause serious injury! If injured by escaping fluid, see a doctor at once. If proper Medical treatment is **NOT** administered **IMMEDIATELY** Serious infection or reaction can develop!



Exercise the **MANDATORY SAFETY SHUT-DOWN PROCEDURE** but find an elevated surface to set the cutter on, or have a second person block the cutter in place before shutting off the host machine.

7.1 PIC REMOVAL AND REPLACEMENT

To achieve maximum pic life and optimum performance, the pics will require replacement for the following reasons:

1. They are broken or worn.
2. They are seized in the pic holder and do not rotate freely.

7.2 REMOVAL

WARNING: ALWAYS wear safety glasses with side shields when striking metal. Failure to heed could result in serious injury to the eyes or other parts of the body!

To remove pic (s):

1. Rotate the wheel until the pic to be removed is conveniently accessible.
2. Hold the pic removal tool in one hand and place the jaws in the groove of the pic with the offset handle pointing away from the pic holder.
3. Using a lead hammer or rubber-headed mallet, hit the raised pad on the tool until the pic starts to move, and continue to tap it out.

NOTE: If the pic does not have a groove, use a pic punch and a lead hammer or rubber-headed mallet to drive the pic out of the holder from the backside.

7.3 REPLACEMENT



WARNING: ALWAYS wear safety glasses with side shields when striking metal. Failure to heed could result in serious injury to the eyes or other parts of the body!

To replace a pic proceed as follows:

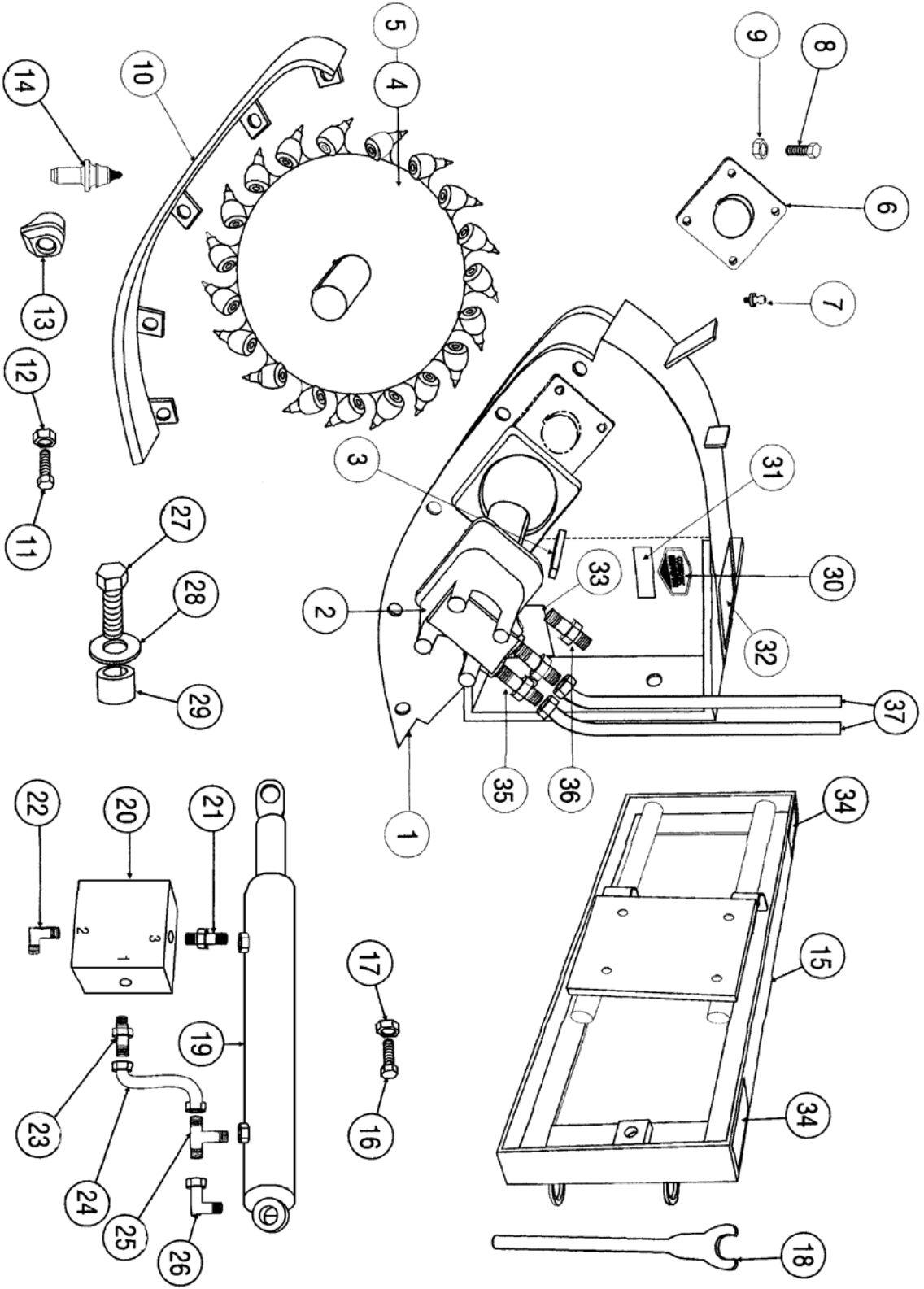
1. With the pic removal tool in one hand, position the new pic in the jaws of the tool so that the raised pad of the tool is pointing in the same direction as the pic point.
2. Position the stem of the pic in the hole of the pic holder.
3. With a lead hammer or rubber-headed mallet, hit the raised pad of the tool to start the pic into the holder.
4. With one strong blow, strike the tool pad to pop the pic into the hole of the holder.

The pic is properly seated when it's shoulder is against the face of the pic holder. **BE SURE** to test that the pic rotates freely.

NOTE: If the pic does not have a groove, position the stem of the pic in the hold in the holder, and using a lead hammer or rubber-headed mallet, lightly hammer the point of the pic until the pic is seated in the holder.

7.4 CHANGING A WHEEL

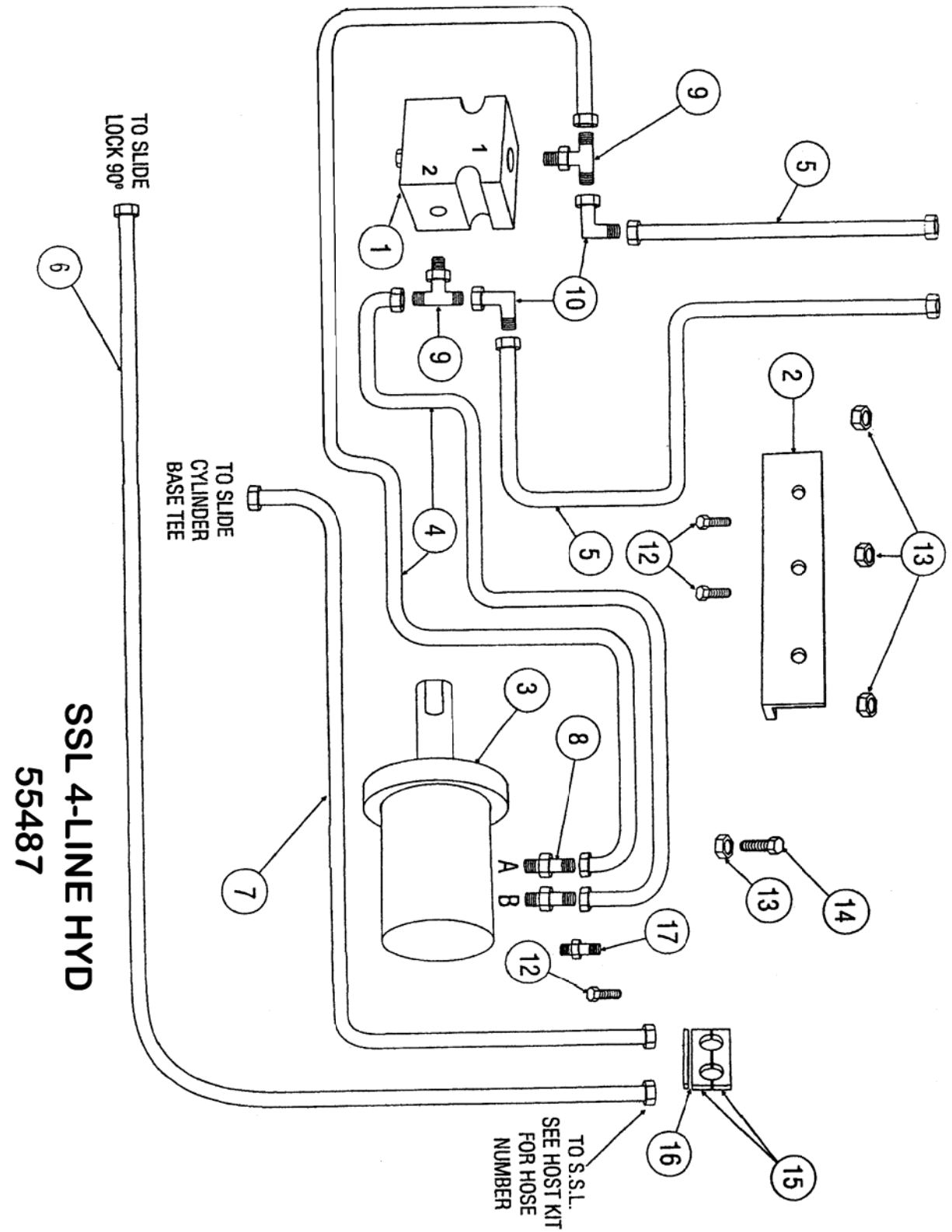
1. Place the cutter in a convenient position.
2. Remove the four socket head cutter motor bolts, and pull the motor out of the wheel. Some motors are difficult to remove and may require a pulling device.
3. After the motor has been removed, remove the four bolts from the axle shaft bearing, and pull the axle shaft and wheel straight out of the slot.
4. Check all hardware removed, and replace if damaged.
5. Reverse instructions 1 and 2 to complete the wheel change. Upon installing the motor, clean the shaft bore and motor shaft, and coat with an anti-seize.



SSG SLOT CUTTER PARTS LIST

ITEM	P/N	DESCRIPTION	QTY
1	56136V	Main Housing Assy VIS Motor	1
1	56136D	Main Housing Assy Danfoss Motor	1
2*	52708	OMV 500	AR
2*	52588	OMV 630	AR
2*	54329	OMV 800	AR
3	52681	Key - Motor	1
4	56158A	Wheel, 3" Cut Width Danfoss	1
4	56158B	Wheel, 5" Cut Width Danfoss	1 Opt
5	56144A	Wheel, 3" Cut Width VIS Motor	1
5	56144B	Wheel, 5" Cut Width VIS Motor	1 Opt
6	54958	Bearing Assy	1
7	29F-01	Grease Zerk	1
8	50A-1018	HHCS 5/8-18 x 2-1/4	4
9	30C-10	5/8-18 Nylock Nut	4
10	56143R	Gauging Shoe Right	1
10	56143L	Gauging Shoe Left	1
11	50A-0612	HHCS 3/8 -16x 1-1/2	5
12	30C-06	3/8" Nylock Nut	5
13	40028	Pic Holder	AR
14	10150	Pic, Low Torque Pyramid Flare	AR
14	10151	Pic, Combination	AR
14	40030	Pic, Concrete	AR
15	54343	Crosslide	1
16	50A-1024	HHCS 5/8 -11x 3 GR 8 Bolt	4
17	30C10	5/8 -11 Nylock Nut	4
18	40069	Pic Wrench	1
19	54064	Slide Cylinder	1
20	52981	Lock Valve	1
20	54946	Seal Kit for 52981 Valve	AR
21	111K-0604	SAE/NPT Str	1
22	111B-0406	JIC/SAE 90°	1
23	111E-0406	JIC/SAE Str	1
24	54114	Hose (1/4x25)	1
25	111Y-0404	JIC/NPT Tee	1
26	112B-04	Adapter 90°	1
27	350A-20050	M20 x 50 HHCS	2
28	14C12	Washer Flat 3/4	4
29	54991	Bushing, Cylinder	2
30	C-21088	Decal, Coneqtec	2
31	C-21093	Decal, SG-7	2
32	80443	Decal, Caution	1
33	80440	Decal, Danger	2
34	251747A1	Decal, Pinch Point	2
35	111E-1216	Adapter, JIC/SAE - Eaton	2
35	40040	Adapter, JIC/BSPP - Adan/Danfoss	2
35	42077	Bonded Seal BSPP- Adan/Danfoss	2
36	111E-0604	Case Drain - Eaton	1
36	111Q-0604	Case Drain - Adan/Danfoss	1
37	54723	Hose 3/4" x 52"	2

*HYDRAULIC MOTOR SHOULD BE SIZED TO RUN WITH THE HOST UNIT.

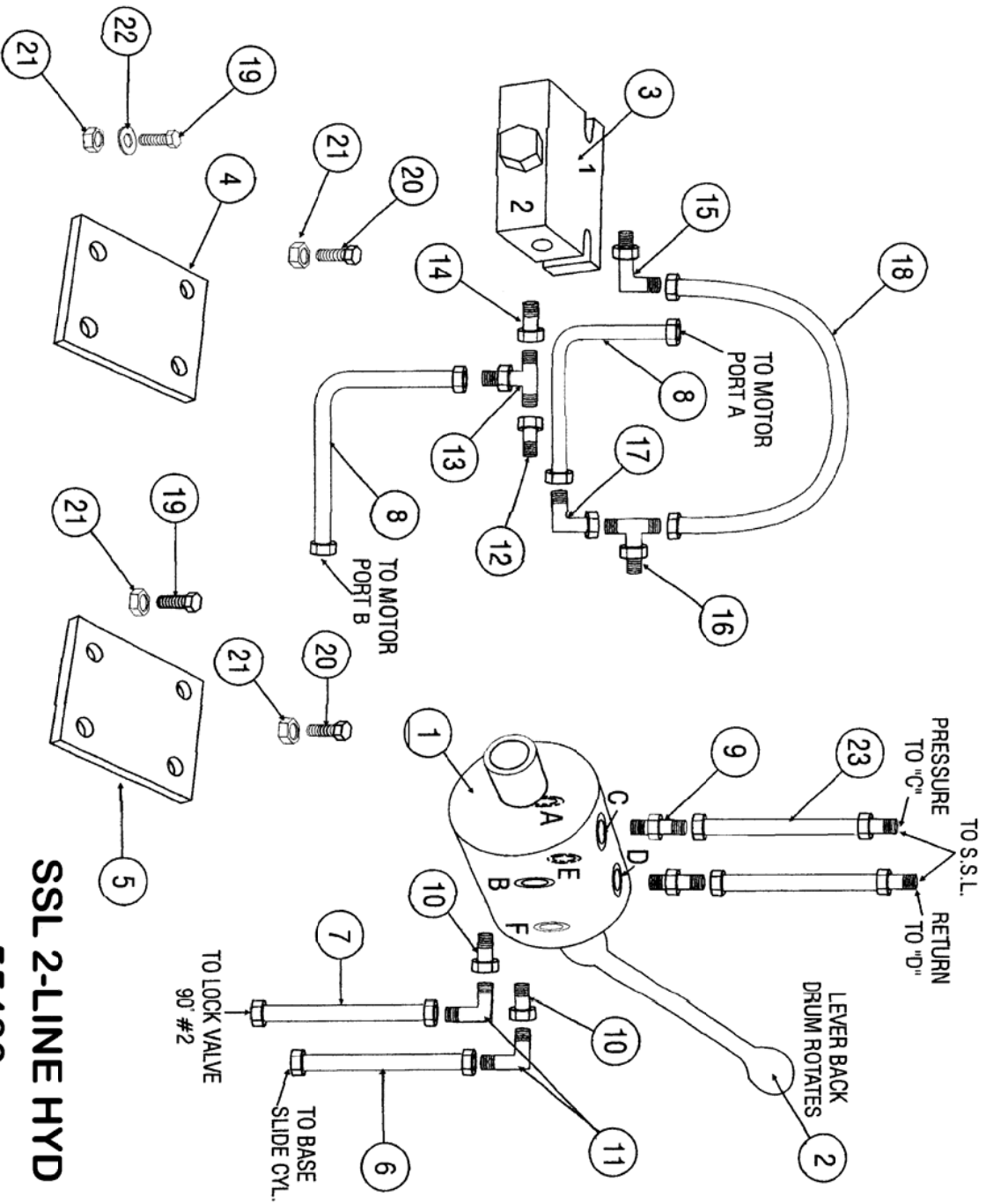


4-LINE HYD PARTS LIST

55487

<u>ITEM</u>	<u>P/N</u>	<u>DESCRIPTION</u>	<u>QTY</u>
1	55344	Overrunning Valve	1
1	56049	Seal Kit for O.R. Valve	AR
2	55463	O.R. Valve Bracket	1
3		Motor - (See Motor Size Table)	1
4	54723	Hose 3/4" x 52" Motor Pressure	2
5*		Hose 3/4" To S.S.L.	2*
6*		Hose 1/4" Slide Cylinder	1*
7*		Hose 1/4" Slide Cylinder	1*
8	40040	Adapter Motor - Adan/Danfoss SAEM / BSPP	2
8A	42077	Bonded Seal - Adan/Danfoss	2
8	111E-1216	Adapter Motor - Eaton JICM / SAEM	2
9	111C-12	Adapter Tee JICM / SAEM	2
10	112B-12	Adapter 90° HHCF / JICM	2
11	50A-0516	5/16-18 x 2 HHCS	1
12	50A-0522	5/16-18 x 2-3/4 HHCS	2
13	30C-05	5/16-18 Nylock Nut	4
14	50A-0510	5/16-18 x 1-1/4 HHCS	2
15	54047	Hose Clamp 1/4 (Pair)	1
16	54048	Hose Clamp Plate	1
17	111E-0604	Adapter Case Drain Eaton	1
17	111Q-0604	Adapter Case Drain Adan/Danfoss	1

* HOSES WILL DEPEND ON WHICH S.S.L.
THE PLANER IS ON. SEE HOST KIT FOR THAT LOADER.



SSL 2-LINE HYD

55488

2-LINE HYD PARTS LIST

55488

ITEM	P/N	DESCRIPTION	QTY
1	55472	Selector Valve Inc Lever	1
1	56050	Seal Kit Selector Valve	AR
2	55483	Lever only	1
2	55621	Lever Link Kit	AR
2	55622	Lever Link Bkt	AR
3	55344	Overrunning Valve	1
3	56049	Seal Kit for O.R. Valve	AR
4	55481	O.R. Valve Bracket	1
5	55480	Selector Valve Bracket	1
6	54026	Hose 1/4 x 15"	1
7	55482	Hose 1/4 x 35"	1
8	54723	Hose 3/4 x 52" Motor Pressure / Return	2
9	110G-1216	Adapter Str JICM / NPTM	2
10	115B-1608	Adapter Reducer NPTF / NPTM	2
11	110R-0408	Adapter 90° JICM / NPTM	2
12	115B-1612	Adapter Reducer NPTF / NPTM	1
13	110AH-1212	Adapter Tee JICM / NPTM	1
14	111V-12	Adapter Str SAEM / NPTF	1
15	111B-1212	Adapter 90° JICM / SAEM	1
16	110Y-1216	Adapter Tee JICM / NPTM	1
17	112B-12	Adapter 90° JICM / JICF	1
18	55479	Tube Assy 3/4" x 180°	1
19	50A-0522	5/16-18 x 2-3/4 HHCS	4
20	50A-0510	5/16-18 x 1-1/4 HHCS	4
21	30C-05	5/16-18 Nylock Nut	8
22	14C-05	5/16 Flatwasher	2
23*		Hose 3/4" TO SSL	2

* HOSES WILL DEPEND ON WHICH S.S.L.
PLANER IS ON. SEE HOST KIT FOR THAT LOADER.

* WATER KIT –WG55/SSG77
SPRAY BAR KIT ONLY 56148

HOST KITS

55465X BOBCAT HI FLO HOST KIT

Part #	Description	Qty
55900	3/4 x 72" Hose	2
55174	1/4 x 105" Hose	1
55476	1/4 x 125" Hose	1
54136	3/8 x 106" Case Drain Hose	1
111E-0608	Case Drain QC Adapter	1
111E-1212	Adapter	2
111E-0408	Adapter	2

55466X CASE-GEHL-MUSTANG-TRAK-THOMAS WITH UNIVERSAL Q.A. & HI FLO HOST KIT

Part #	Description	Qty
55524	3/4 x 100" Hose	2
55477	1/4 x 62" Hose	1
55478	1/4 x 80" Hose	1
54822	3/8 x 157" Case Drain Hose	1
111E-1212	Adapter	2
111E-0408	Adapter	2
111E-0610	(Case)	1
111E-0608	(Gehl, Mustang)	1
11OG-0608	(Thomas)	1

55469XH JCB HI FLO HOST KIT

Part #	Description	Qty
55524	3/4 x 100" Hose	2
55475	1/4 x 105" Hose	1
55476	1/4 x 125" Hose	1
54822	3/8 x 157" Case Drain Hose	1
40040	Adapter	2
111Q-0406	Adapter	2
111Q-0608	Case Drain QC Adapter	1

HOST KITS (Cont.)

55470 NEW HOLLAND-JOHN DEERE, HOST KIT

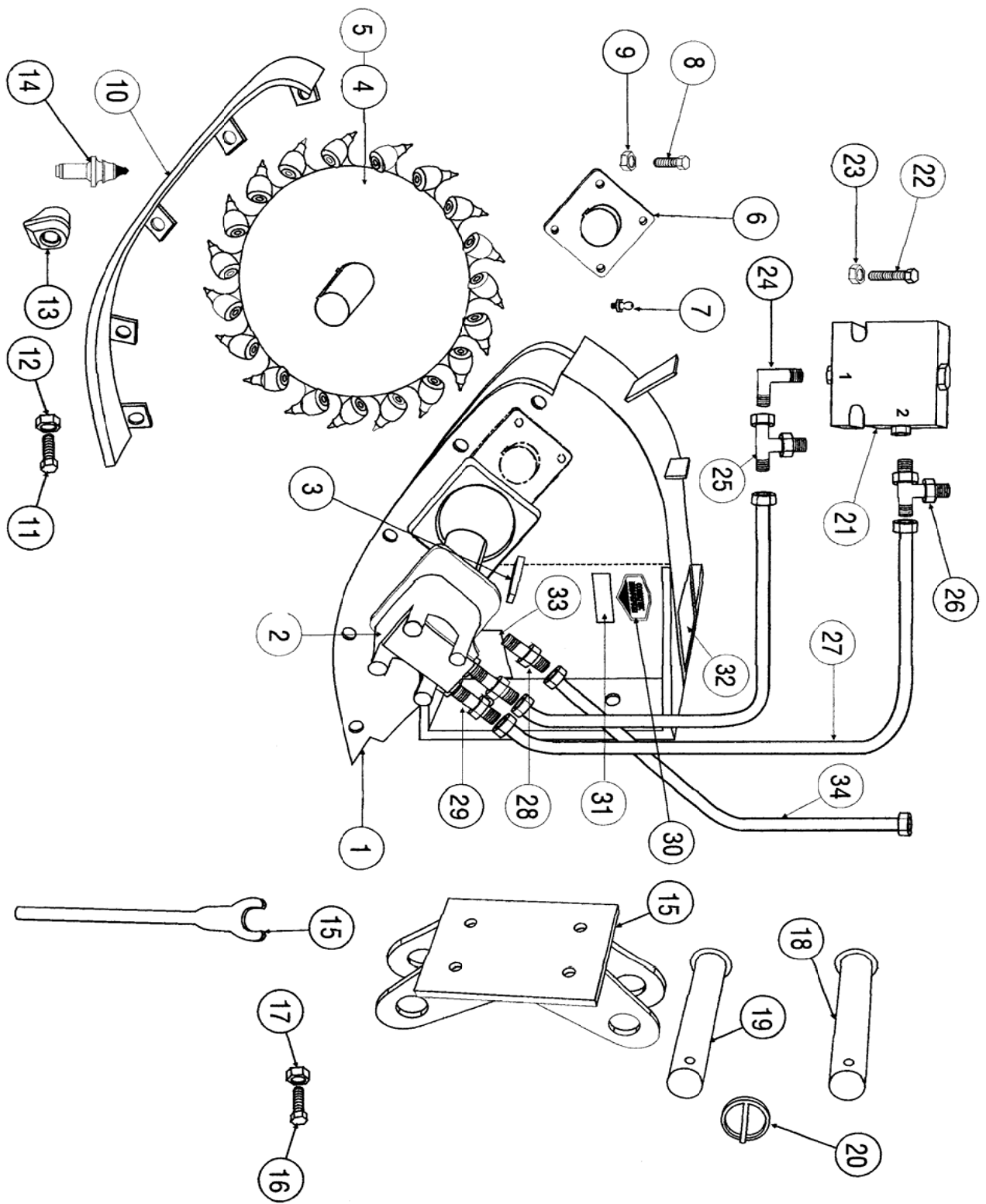
Part #	Description	Qty
55900	3/4 x 72" Hose	2
54822	3/8 x 157" Case Drain Hose	1
111E-1212	Adapter	2
111E-0608	Case Drain QC Adapter	1

55665X CAT 248 HOST KIT-APX & SSG7

Part #	Description	Qty
55902	3/4 x 72" Hose	2
55486	1/4 x 90" Hose	1
55174	1/4 x 106" Hose	1
54170	3/8 x 125" Case Drain Hose	1
111E-1212	Adapter	2
111E-0608	Adapter	1
111E-0408	Adapter	2

55704X CASE APX & SSG 5000 PSI

Part #	Description	Qty
55538	3/4 X 100" Hose	2
55486	1/4 x 90" Hose	1
55174	1/4 x 106" Hose	1
54822	3/8 x 157 Case Drain Hose	1
111E-1212	Adapter	2
111E-0610	Adapter	1
111E-0410	Adapter	2

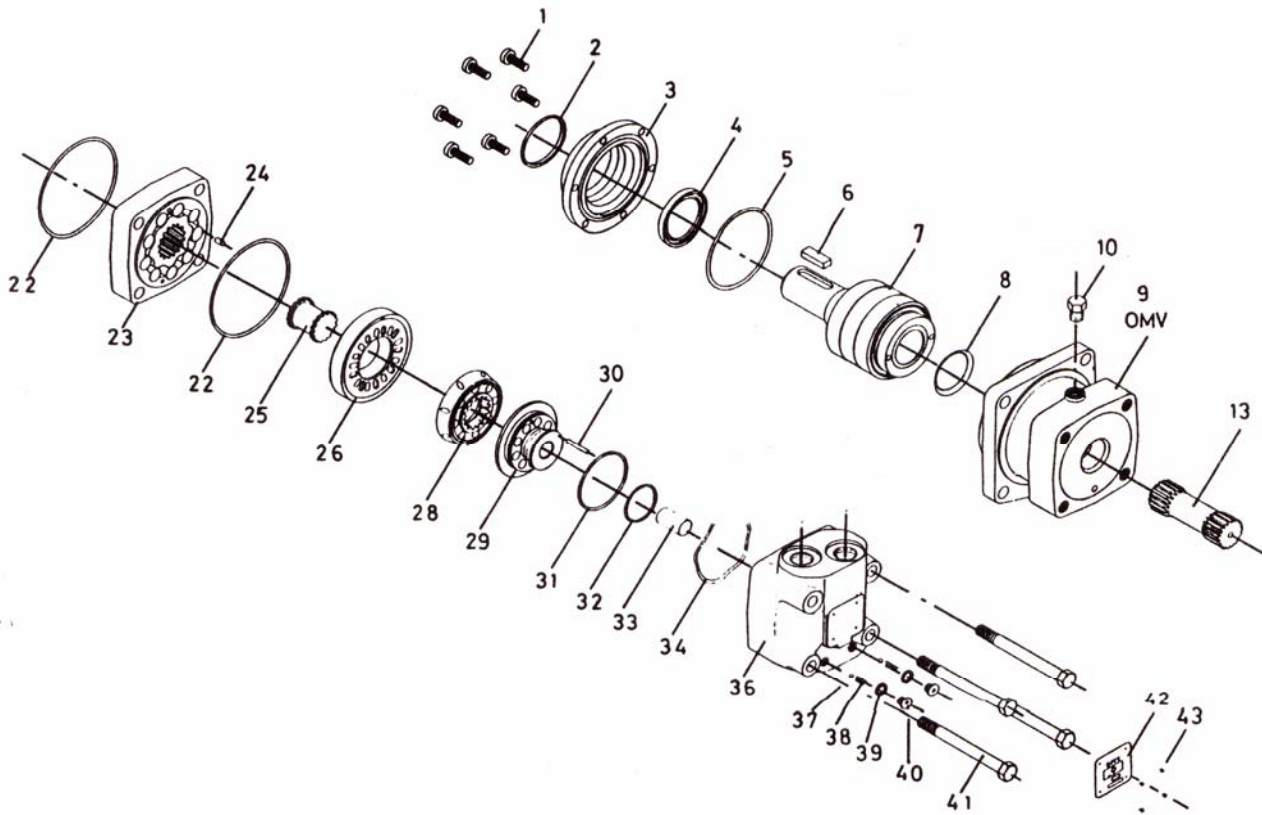


BSG SLOT CUTTER PARTS LIST

ITEM	P/N	DESCRIPTION	QTY
1	C-21001	Main Housing Assy	1
2*	52708	OMV 500	AR
2*	52588	OMV 630	AR
2*	54329	OMV 800	AR
3	52681	Key-Motor	1
4	C-21015	Wheel, 3" Cut Width	1
5	C-21096	Wheel, 5" Cut Width	OPT
6	54958	Bearing Assy	1
7	29F-01	Grease Zerk	1
8	50A-1018	HHCS 5/8-18 x 2-1/4	4
9	30C-10	5/8-18 Nylock Nut	4
10	C-21003	Gauging Shoe	1
11	50A-0612	HHCS 3/8 -16x 1-1/2	5
12	30C-06	3/8" Nylock Nut	5
13	40028	Pic Holder	AR
14	10150	Pic, Low Torque Pyramid Flare	AR
14	10151	Pic, Combination	AR
14	40030	Pic, Concrete	AR
15	C-21020	Coupler Assy for B.H.	1
15	C-21097	Coupler Assy for Mini Excavator	1
16	50A-1024	HHCS 5/8 -11x 3 GR 8	4
17	30C10	5/8-11 Nylock Nut	4
18	C-21097	Pin 1-1/2 x 10	1
19	C-21098	Pin 1-3/4 x 14-3/4	1
20	C-21099	Click Pin	2
21	55344	Overrunning Valve	1
21	56049	Seal Kit O.R. Valve	AR
22	50A-0522	HHCS 5/16-18 x 2-3/4	2
23	30C-05	5/16-18 Nylock Nut	2
24	111B-1212	Adapter 90° JIC/SAE	1
25	111C-1212	Tee JIC/SAE	1
26	111C-1212	Tee JIC/SAE	1
27	C-21100	Hose (24")	2
28	111E-0604	Case Drain - Eaton	1
28	111Q-0604	Case Drain - Adan/Danfoss	1
29	111E-1216	Adapter JIC/SAE - Eaton	2
29	40040	Bonded Seal BSPP - Adan/Danfoss	2
30	C21088	Decal, Coneqtec	2
31	C21093	Decal, BSG-7	2
32	80443	Decal, Caution	1
33	80440	Decal, Danger	2
35	40069	Pic Wrench	1
36	C-21083	35mm Pin (REF: C-21097)	2
36	C-21084	40mm Pin (REF: C-21097)	2
36	C-21085	45mm Pin (REF: C-21097)	2

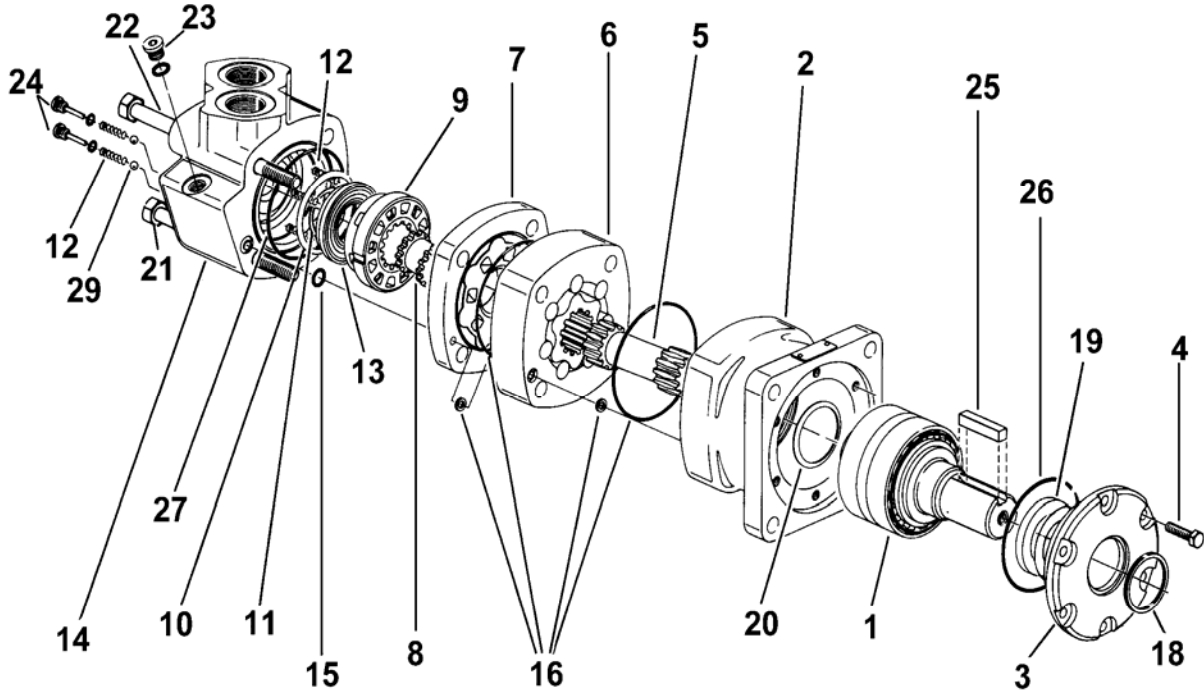
DANFOSS MOTOR OMV PARTS LIST

ITEM	P/N	DESCRIPTION	QTY	ITEM	P/N	DESCRIPTION	QTY
1	52676	Screw M8x1x20mm	6	26	52694	Channel Plate	1
2	52677	Dust Deal Ring	1	28	52695	Disc Valve	1
3	52678	Front Cover	1	29	52969	Balance Plate	1
4	52679	Shaft Seal	1	30	52697	Guide Pin	1
5	52680	O Ring	1	31	52698	O Ring	1
6	52681	Parallel Key	1	32	52699	O Ring	1
7	52682	Shaft Including Bearing	1	33	52700	Spacer	1
8	52683	Conical Seal Ring	1	34	52701	Spring Washer	1
9	52684	Bearing Housing	1	36	52702	Valve Housing	1
10	52685	Drain Plug Including O Ring	1	37	52703	Ball	2
13	52687	Cardan Shaft for 52708 500 mtr	1	38	52704	Springs	2
13	55333	Cardan Shaft for 52588 630 mtr	1	39	52705	Washers	2
13	55334	Cardan Shaft for 54329 800 mtr	1	40	52706	Plugs	2
22	52689	O Ring	1	41	52707	Cap Screw OMV500 & 630	4
23	52690	Gearwheel set for 52588 630mtr	1	41	55335	Cap Screw for 54329 800mtr	4
23	52691	Gearwheel set for 52708 500mtr	1	42	55254	Name Plate OMV	1
23	55332	Gearwheel set for 54329 800mtr	1	43	54930	Drive Screw	4
24	52692	Guide Pin	1	44	52829	Seal Kit OMV Includes items 2,4,5,8,22,31,32	1
25	52693	Valve Drive	1				



EATON 6K MOTOR PARTS LIST

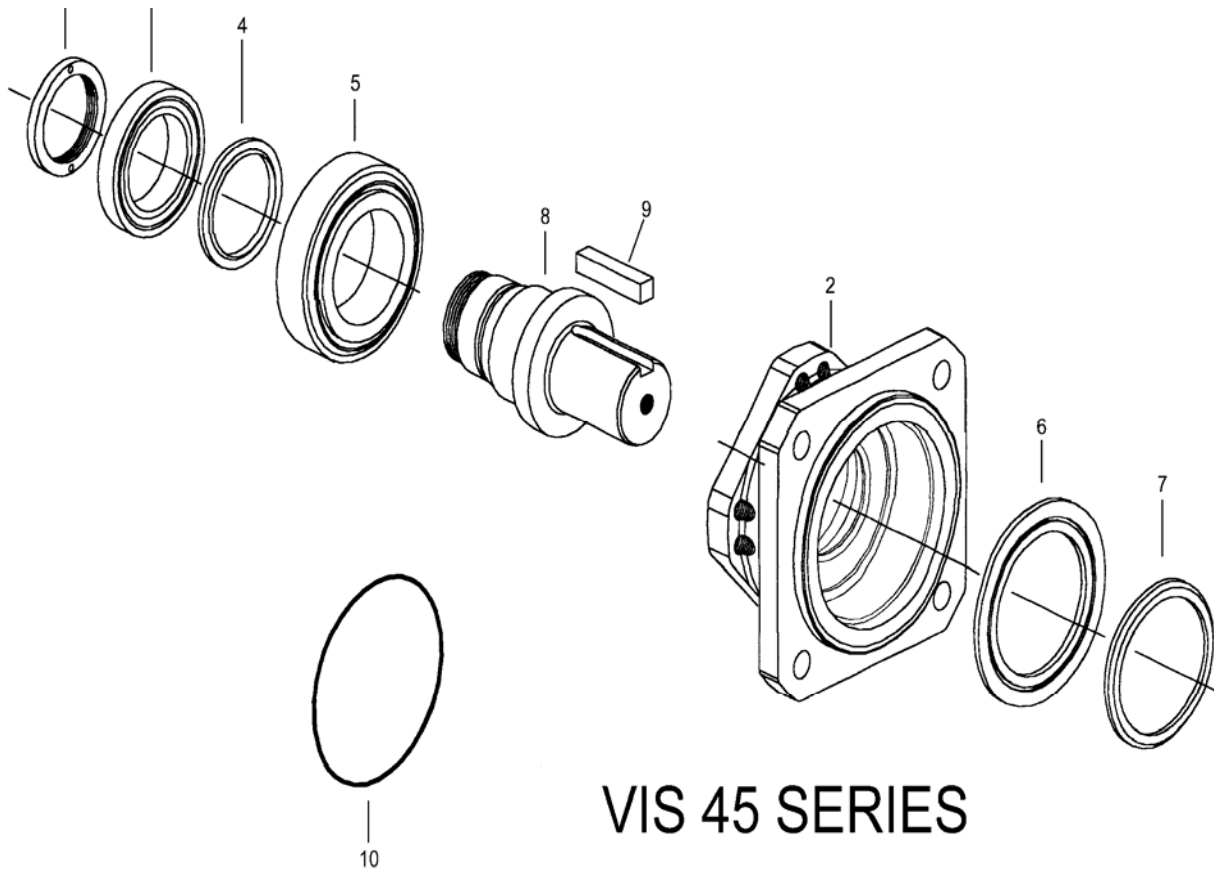
ITEM	P/N	DESCRIPTION	QTY	ITEM	P/N	DESCRIPTION	QTY
1	55560	50MM Shaft & Bearing	1	15	55581	Seal	1
2	55561	Housing Bearing	1	16	55582	Seal	2
3	55562	Retainer Front	1	17	55583	Seal	2
4	50A-0508	Screw Cap	6	18	55584	Seal Dust	1
5	55563	Drive Main 390	1	19	55585	Seal Shaft	1
5	55564	Drive Main 490	1	20	55586	Seal Shaft Face	1
5	55565	Drive Main 625	1	21	55587	Screw Cap 390	2
5	55566	Drive Main 800	1	21	55588	Screw Cap 490	2
5	55567	Drive Main 985	1	21	55589	Screw Cap 625	2
6	55568	Geroler 390	1	21	55590	Screw Cap 800	2
6	55569	Geroler 490	1	21	55591	Screw Cap 985	2
6	55570	Geroler 625	1	22	55592	Screw Cap 390	2
6	55571	Geroler 800	1	22	55593	Screw Cap 490	2
6	55572	Geroler 985	1	22	55594	Screw Cap 625	2
7	55573	Plate Valve	1	22	55595	Screw Cap 800	2
8	55574	Drive Valve	1	22	55596	Screw Cap 985	2
9	55575	Valve	1	23	55599	Plug Assy	1
10	55576	Seal Face Outer	1	24	55600	Check Plug Assy	2
11	55577	Seal Face Inner	1	25	52681	Key	1
12	55578	Spring	3	26	55597	Seal	1
13	55579	Balance Ring w/Pins	1	27	55598	Seal	1
14	55580	Housing Valve	1				



EATON 6K MOTOR

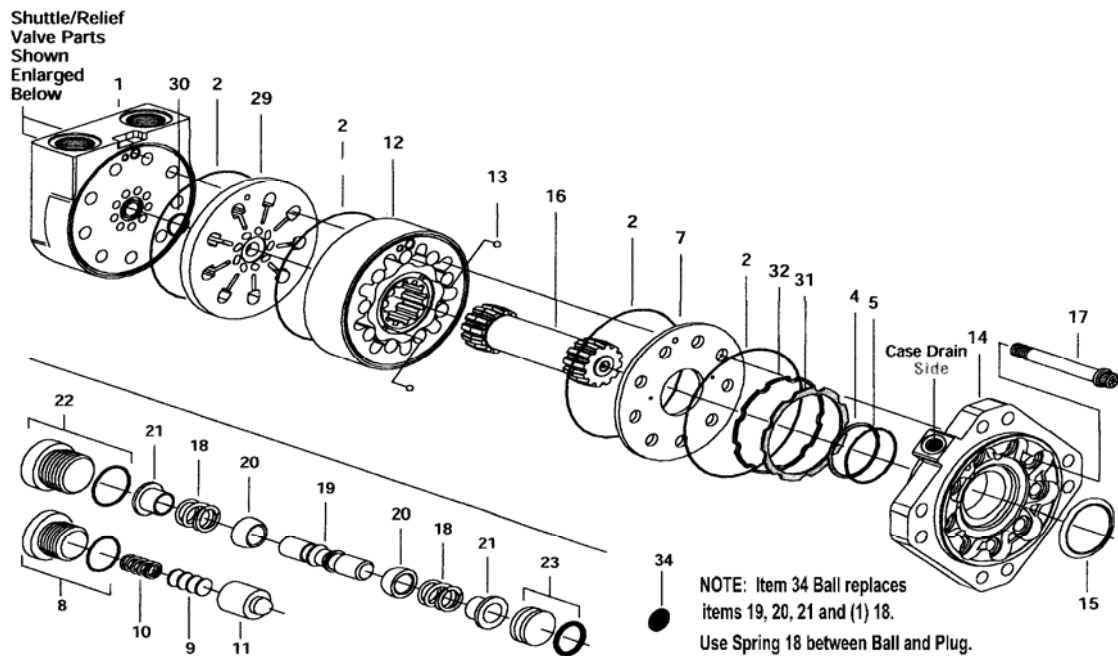
EATON VIS 45 FRONT SECTION

ITEM	P/N	DESCRIPTION	QTY
1 *	55649	Ring Retaining	1
2	55895	Housing Bearing	1
3	55650	Bearing	1
4 *	SEE KIT	Seal	1
5	55651	Bearing	1
6	55652	Retainer Front	1
7 *	SEE KIT	Seal Protector	1
8	55653	Shaft	1
9	55542	Key .625 x .625 (not shown)	1
9	55896	Key .625 x .500 (not shown)	1
10 *	SEE KIT	O Ring	1
11	55324	Seal Kit Inc'd *	AR



ITEM	P/N	DESCRIPTION	QTY	ITEM	P/N	DESCRIPTION	QTY	
1	55770	Cap End	NSS	16	55789	Drive Shaft 1245CC	1-NSS	
2*	55771	Seal Square	4	16	55790	Drive Shaft 1557CC	1-NSS	
4*	55772	Ring Backup	1	17	55791	Screw Cap 800CC	9-NSS	
5*	55773	O' Ring	1	17	55792	Screw Cap 991CC	9-NSS	
7	55774	Balance Plate	NSS	17	55793	Screw Cap 1245CC	9-NSS	
7	55775	Balance Plate	NSS	17	55794	Screw Cap 1557	9-NSS	
8	55776	Plug/O' Ring	NSS	18	55795	Spring	2-NSS	
9	55777	Shim	NSS	AR	19	55796	Piston Shuttle	1-NSS
10	55778	Spring	NSS	1	20	55797	Poppet	2-NSS
11	55779	Poppet	NSS	1	21	55798	Sleeve Dashpot	2-NSS
12	55780	Geroler Assy 800CC	NSS	1	22	55799	Plug/ O Ring	1-NSS
12	55781	Geroler Assy 991CC	NSS	1	23	55800	Plug/ O Ring	1-NSS
12	55782	Geroler Assy 1245CC	NSS	1	27	55801	Ball	1-NSS
12	55783	Geroler Assy 1557CC	NSS	1	29	55802	Valve Plate	1-NSS
13	55784	Ball	NSS	2	30*	55803	O Ring	1
14	55785	Flange Mounting 8 Bo	NSS	1	31*	55804	Seal	1
15*	55786	Seal Face	1	32*	55805	Ring Backup	1	
16	55787	Drive Shaft 800CC	NSS	1	33	55654	Seal Kit Mtr Sect Inc *	AR
16	55788	Drive Shaft 991CC	NSS	1	34	56540	Ball	1-NSS

VIS 45 Series





P/N 55702

3348 S. Hoover • Wichita, KS 67215 • 316-946-5885