

TABLE OF CONTENTS

1. PRODUCT WARRANTY	3
2. CHECKLIST Dealer's File Copy.....	4
Customer's File Copy.....	5
3. INTRODUCTION	6
4. SPECIFICATIONS	7
5. SAFETY	8-9
5.1 Mandatory Safety Shutdown Procedure.....	9-11
6. OPERATION	11
6.1 Forward.....	11
6.2 Attaching to and Detaching From a Skidsteer Loader.....	12
6.3 Adjustments.....	12
PB Adjustment Drawing.....	13
6.4 Operating Pickup Broom.....	13
6.5 Sweeping.....	14
Sweeping Direction Drawing.....	14
6.6 Dumping.....	15
7. MAINTENANCE	15
7.1 Lubrication and Inspection.....	15
7.2 Replacing Brush	15-16
8. PARTS	17
Pickup Broom Drawing.....	17
Pickup Broom Parts List.....	18-19
Gutter Brush Kit Drawing.....	20
Gutter Brush Kit Parts List.....	21
9. OPTION - GUTTER BRUSH	22
9.1 Installing A Gutter Brush.....	22
9.2 Adjusting The Gutter Brush.....	22
9.3 Using the Gutter Brush.....	22
9.4 Replacing The Gutter Brush.....	23
10. GUTTER BRUSH HYDRAULIC SCHEMATIC	24
Gutter Brush Hydraulic Schematic Drawing.....	24
Gutter Brush Hydraulic Schematic Parts List.....	25
11 WATER KITS	
Water Kit Parts	26
Water Kit Parts List	27
Water Pump and Wiring Assy.....	28
Water Pump and Wiring Parts List.....	29

Revised 08/08/08

1. PRODUCT WARRANTY



PURPOSE OF POLICY

The policy covers correction of defects in workmanship and/or materials called to the attention of Coneqtec/Universal and is subject to all conditions of the warranty.

STATEMENT OF WARRANTY

Coneqtec/Universal warrants its products for up to one year from the purchase date when correctly used under normal operating conditions. Coneqtec/Universal makes no other warranty expressed or implied.

This warranty shall not apply to any products that have been altered, changed or repaired in any manner whatsoever. Nor shall it apply to any product when has been subject to misuse, negligence or accident.

The exclusive and sole remedy for breach of contract (including breach of any express or implied warranty) shall be limited to repair, modification or replacement of the sole discretion of Coneqtec/Universal shall not in any event be liable to anyone. Faulty or suspect parts must be returned to Coneqtec/Universal at user's cost.

GENERAL

Coneqtec/Universal reserves the right to make changed or improvements in design or construction of any part without incurring the obligation to install such changes on any unit previously delivered.

WARRANTY PARTS & LABOR PROCEDURES

WARRANTY PARTS & LABOR POLICY

Warranty parts credits will be allowed for the replacement parts that prove in the company's judgment to be defective in material or workmanship on machines sold to the original purchaser. No consideration whatsoever will be make on used, second-hand, altered or rebuilt machinery.

Only genuine Coneqtec/Universal parts will be used in correction of defective products. Any parts used that are not of Coneqtec/Universal origin will not be warranted unless prior Coneqtec/Universal approval has been granted.

Warranty labor will be paid at \$40 per hour based on flat rated established by Coneqtec/Universal; however, no mileage or mileage time will be reimbursed.

Warranty will not be paid if the dealer is not capable of doing the testing that is required by Coneqtec/Universal (this pertains to hydraulic testing and the use of pressure testing equipment) to determine the location or source of the problem..

OWNER RESPONSIBILITY

Every owner is responsible for the machine's proper use and maintenance. Parts that are simply worn out through normal wear and tear, or abused or damaged due to lack of maintenance or adjustment are not subject for warranty consideration.

DEAL RESPONSIBILITY

Coneqtec/Universal requires that the dealership has a service center that is staffed and has the ability to setup and do pre-delivery on all units prior to delivery and to do testing that is required by Coneqtec/Universal in the event that there is a problem with the machine.

It is also required that the dealers instruct the customer on the proper operation and safety procedures.

WARRANTY PROCEDURE

Warranty will not be considered on the following unless it can be proved there is negligence in workmanship or materials.

Wear items such as pics, pic blocks, blades, cutters and brushes.

Hoses that have been worn or damaged by use.

PROCEDURE FOR CLAIM

Prior to starting any warranty work please call Coneqtec/Universal for approval and notification of flat rate allowances. All warranty claims must be received within thirty days of warranty repair in order to be a valid warranty claim. Otherwise warranty claim will be denied. A copy of the parts invoices and shop work orders must be submitted with the warranty form, and the form must be filled out completely with all customer and machine information. The warranty/RGA form with parts should then be sent to the designated location stated on form. Coneqtec/Universal will pay only standard Fed Ex or LTL truck freight on warranty items.

All warranty credits will be applied to the dealer's account.

Revised 12/06/02

P. O. BOX 9102 - WICHITA , KS 67277 - (888) 832-3462 - Fax (316) 946-5552

2. CHECKLIST

DEALER'S FILE COPY

2.1 PRE-DELIVERY

After the Pickup Broom has been completely setup and attached to the host machine, inspect the following. Check off each item after the prescribed action is taken.

Check that:

- ◆ No parts of the unit have been damaged in shipment. Check for things such as dents and loose or missing parts; correct or replace components as required.
- ◆ All bolts and fasteners are in place and tightly secured.
- ◆ All grease fittings have been properly lubricated; see lubrication information in this manual.
- ◆ All decals are in place and securely attached.
- ◆ The serial number of your unit is recorded in the space provided on this page.
- ◆ Then, test run the unit while checking that all components are operating correctly.

I acknowledge that the procedures were performed on this unit as outlined above

DEALERSHIP NAME

DEALER REPRESENTATIVE'S NAME

DATE CHECKLIST FILLED OUT

2.2 DELIVERY

The following checklist is an important reminder of the valuable information that **MUST** be passed on to the Customer at the time the unit is delivered. Check off each item as you explain it to the Customer.

- ◆ Give the customer his operators manual. Instruct him to be sure to read and completely understand its contents **BEFORE** operating the unit.
- ◆ Explain and review with him the **SAFETY** information in this manual.
- ◆ Explain that regular cleaning and lubrication are required for proper operation and long life. Review with him the lubrication information in this manual.
- ◆ Explain and review with him the service & maintenance information in this manual.
- ◆ Completely fill out the owner's registration, including the customer's signature and return it to the manufacturer.

I acknowledge that the above points were reviewed with me at the time of delivery.

CUSTOMER'S SIGNATURE

DATE DELIVERED

2. CHECKLIST

CUSTOMER'S FILE COPY

2.1 PRE-DELIVERY

After the Pickup Broom has been completely setup and attached to the host machine, inspect the following. Check off each item after the prescribed action is taken.

Check that:

- ◆ No parts of the unit have been damaged in shipment. Check for things such as dents and loose or missing parts; correct or replace components as required.
- ◆ All bolts and fasteners are in place and tightly secured.
- ◆ All grease fittings have been properly lubricated; see lubrication information in this manual.
- ◆ All decals are in place and securely attached.
- ◆ The serial number of your unit is recorded in the space provided on this page.
- ◆ Then, test run the unit while checking that all components are operating correctly.

I acknowledge that the procedures were performed on this unit as outlined above

DEALERSHIP NAME

DEALER REPRESENTATIVE'S NAME

DATE CHECKLIST FILLED OUT

SERIAL NUMBER

2.2 DELIVERY

The following checklist is an important reminder of the valuable information that **MUST** be passed on to the Customer at the time the unit is delivered. Check off each item as you explain it to the Customer.

- ◆ Give the customer his operators manual. Instruct him to be sure to read and completely understand its contents **BEFORE** operating the unit.
- ◆ Explain and review with him the **SAFETY** information in this manual.
- ◆ Explain that regular cleaning and lubrication are required for proper operation and long life. Review with him the lubrication information in this manual.
- ◆ Explain and review with him the service & maintenance information in this manual.
- ◆ Completely fill out the owner's registration, including the customer's signature and return it to the manufacturer.

I acknowledge that the above points were reviewed with me at the time of delivery.

CUSTOMER'S SIGNATURE

DATE DELIVERED

3. INTRODUCTION

The **Pickup Broom** was designed as an attachment machine for use on skid steer loaders. The information contained in this manual refers only to the Pickup Broom Machine. Information regarding the valves used to control oil flow to the Pickup Broom attachment can be found in the host machine's manual.

The information contained within is provided to assist you in preparing, adjusting, maintaining and servicing your machine. More importantly, this manual provides an operating plan for safe and proper use of your machine. Major points of safe operation are detailed in the safety chapter of this manual. Refer to the table of contents for an outline of this manual.

Modern machinery has become more sophisticated and, with that in mind, you must read and understand the contents of the manual **COMPLETELY** and become familiar with your new machine before attempting to operate it.

Terms such as “right” and “left” as used in the manual, are as though the reader is sitting in the host machine's operator seat and facing the Pickup Broom.

Throughout this manual, information is provided which is set in bold type and introduced by the word **NOTE:** Be sure to read carefully and comply with the message or directive given. Following this information will improve your operating or maintenance efficiency, help you to avoid costly breakdowns or unnecessary damage, and extend the life of your machine.

The Manufacturer and Society of Automotive Engineers have adopted this **SAFETY ALERT SYMBOL** to pinpoint characteristics that, if not properly followed, can create a safety hazard. When you see this symbol in this manual or on the unit itself, you are reminded to **BE ALERT! YOUR SAFETY IS INVOLVED!**



The manufacturer reserves the right to make changes or improvements in the design or construction of any part without the obligation to install such changes on any unit previously delivered.

4. SPECIFICATIONS

MODEL	SWEEPING WIDTH
PB-1500.....	60 Inches (1524 mm)
PB-1800.....	72 Inches (1829 mm)

WEIGHT :

PB1500.....530 lbs.

PB1800.....625 lbs.

5. SAFETY

BEFORE YOU ATTEMPT TO OPERATE THIS EQUIPMENT, READ AND STUDY THE FOLLOWING SAFETY INFORMATION. IN ADDITION, MAKE SURE THAT EVERY INDIVIDUAL WHO OPERATES OR WORKS WITH THIS EQUIPMENT IS FAMILIAR WITH THESE SAFETY PRECAUTIONS.



The Manufacturer always takes the operator and their safety into consideration when designing machinery. Guards are provided on exposed moving parts for the operator's protection, however, some areas cannot be guarded or shielded in order to assure proper operation. In addition, the operator's manual and decals on the machine itself warn you of further danger and should be read and observed closely.

The **SAFETY ALERT SYMBOL** above means **ATTENTION! BECOME ALERT! YOUR SAFETY IS INVOLVED!** It stresses an attitude of “**HEADS UP**” for safety and can be found throughout this operator's manual and on the unit itself.

REMEMBER: The careful operator is the best operator. Most accidents are caused by human error. Certain precautions must be observed to prevent the possibility of injury or damage.

Please read the rules listed below for safe operation **BEFORE** you operate this equipment.

Use of words **CAUTION**, **WARNING**, or **DANGER**, herein and on the machine itself, signal three degrees of hazard.

CAUTION is used for general reminders of good safety practices or to direct attention to unsafe practices.

WARNING is used to denote a specific potential hazard.

DANGER is used to denote the most serious specific potential hazard.



5.1 MANDATORY SAFETY SHUTDOWN PROCEDURE

Work of any type on machinery is always more dangerous when the machine is operating. **BEFORE** cleaning, lubricating, or servicing this unit, the following **MANDATORY SAFETY SHUTDOWN PROCEDURE** should **ALWAYS** be followed:

1. Move host machine's propulsion control to the neutral position and **idle engine down**.
2. Shut off oil flow to Pickup Broom.
3. Position Pickup Broom so that it is completely resting on the ground or floor.
4. Engage the host machine's hand brake.
5. Move the host machine's throttle to the slow idle position, shut the Engine off and remove the Ignition Key.

REMEMBER ALWAYS IDLE ENGINE DOWN BEFORE SHUTTING OFF OIL FLOW.

ONLY when you have taken these precautions can you be sure it is safe to proceed. Failure to follow the above procedures could lead to death or serious bodily injury!

Some diagrams used herein may show Door(s), Guard(s), or Shield(s) open or removed for illustration purposes **ONLY! BE SURE** that all Door(s), Guard(s), and Shield(s) are in their proper position(s) and securely attached **BEFORE** operating the Pickup Broom!

Read and observe ALL Safety information and Decals on the host machine and Pickup Broom **BEFORE** operating the unit! In addition, familiarize yourself with ALL of the Safety Devices and periodically check that they are functioning properly!

Refer to the **SAFETY** chapter of the host machine's operator manual and observe **ALL** Safety recommendations set forth in that manual!

CAREFULLY inspect **ALL** hydraulic hoses and connections on a routine basis;
NEVER use your hand, escaping fluid under pressure can cause serious injury!

BE SURE to exercise the **MANDATORY SAFETY SHUT DOWN PROCEDURE BEFORE** proceeding to do any work on the Pickup Broom!

BE SURE the Pickup Broom is properly placed on the ground, **BEFORE** attempting to work on the Pickup Broom.

BEFORE transporting the Pickup Broom, **BE SURE** to raise the unit completely clear of the ground and turn it off.



ALWAYS wear proper clothing and covering when working with or on the Pickup Broom.

ALWAYS wear safety glasses or face shield while operating the Pickup Broom.

DO NOT attempt to work on the Pickup Broom or host machine with the hydraulics live! **BE SURE** to relieve the hydraulic pressure, by shutting down the engine and moving all control levers to relieve hydraulic pressure **BEFORE** attempting to disconnect any hoses or **BEFORE** proceeding to remove the Pickup Broom from the host machine.

DO NOT use the Pickup Broom to push objects, it can be damaged by contact with solid objects, as well as upset the stability of the host machine!

REMEMBER! It is the owner's responsibility for communicating information on the safe use and proper operation and maintenance of this machine!

6. OPERATION

6.1 FOREWORD

The Pickup Broom must be attached to a host machine equipped to provide the necessary hydraulics and operational controls. As there are many different host machines available, this manual will only deal with the generic operation of the Pickup Broom. Anyone attempting to attach and operate the Pickup Broom must first have the knowledge and skill of operating the host machine's controls. Information regarding the host machine's controls and attaching procedure is found in the host machine's Operators Manual or from its Authorized Dealer.

6.2 ATTACHING TO AND DETACHING FROM A SKIDSTEER LOADER

Drive the skidsteer up to the quick attach of the Pickup Broom and connect up. Exercise the **MANDATORY SAFETY SHUTDOWN PROCEDURE** before proceeding.

After installing hydraulic quick couplers compatible with your skidsteer to the two 1/2" main hoses, connect them to the hydraulic outlets.

Detaching is a reversal of this process.

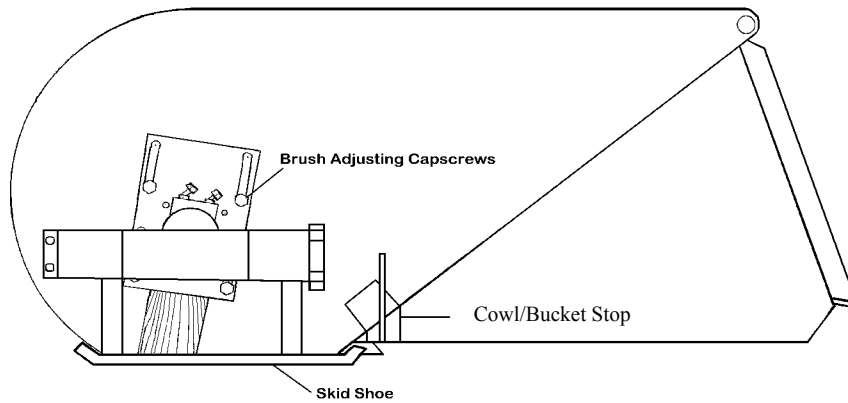
Whenever connecting the Hydraulic hoses be sure to clean the couplers

6.3 ADJUSTMENTS

When in operation the Brush should be adjusted so that the cowl/bucket stops are approximately 1/2" to 5/8" apart or if the broom is equipped with the optional skid shoes they should be 5/8" to 3/4" off the pavement. As the Brush wears and the stops come together or the optional skid shoes start to rub on the pavement the brush must be adjusted.

SEE FIGURE ON PAGE 13

PB ADJUSTMENT



6.4 OPERATING PICKUP BROOM



**CAUTION: Maximum Oil
Flow Is 25 GPM At 3300 PSI.
DO NOT EXCEED.**

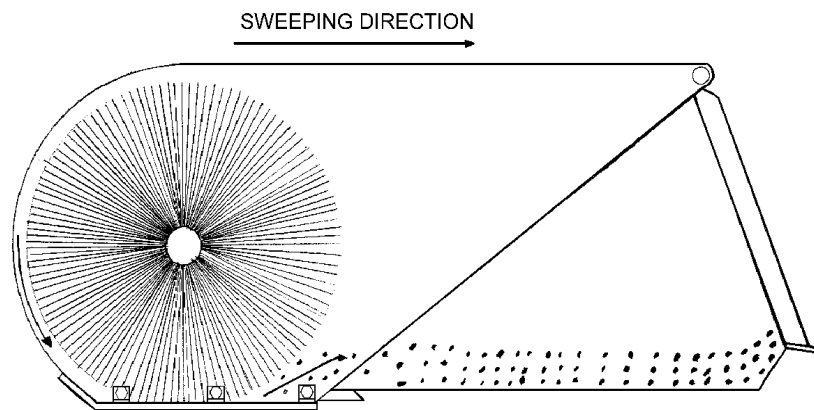
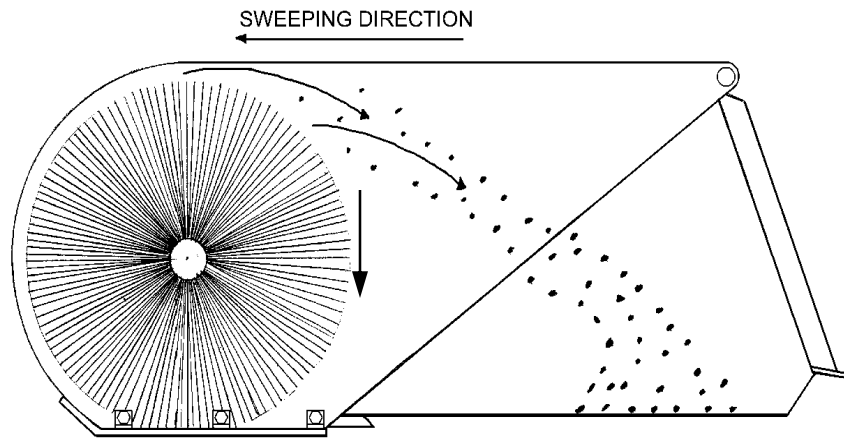
1. Use low engine speeds for maximum brush life and minimum dust.
2. **ALWAYS** engage the brush with engine at idle and increase to operating speed. When stopping brush rotation, **BE SURE** to idle engine down before disengaging oil flow.
3. **NEVER** reverse brush rotation while brush is turning. Severe damage can result.

6.5 SWEEPING

Drive Pickup Broom to the area to be swept. When sweeping forward, rotate the brush so that debris goes over the top of the brush and into the bucket.

When sweeping in reverse, rotate the brush in the opposite direction into the bucket so that it sweeps debris directly into the bucket like sweeping into a dust pan.

The bucket's bolt on cutting edge is for scraping hard packed mud only. Do not allow the bucket to scrape along the ground while sweeping.



6.6 DUMPING

Empty the bucket by raising the Pickup Broom above the area you wish to deposit the debris. Dump the Pickup Broom forward as when emptying a standard bucket.

7.MAINTENANCE

7.1 LUBRICATION AND INSPECTION

Daily grease the bearing on the R.H. side of the Pickup Broom. Two (2) to three (3) shots of a hand grease gun is sufficient.

Lightly oil the hinge of the Pickup Broom cowl between the hinge tubes.

Daily inspect the Pickup Broom for loose hardware, oil leaks, brush and cutting edge wear. Correct as needed.

7.2 REPLACING THE BRUSH

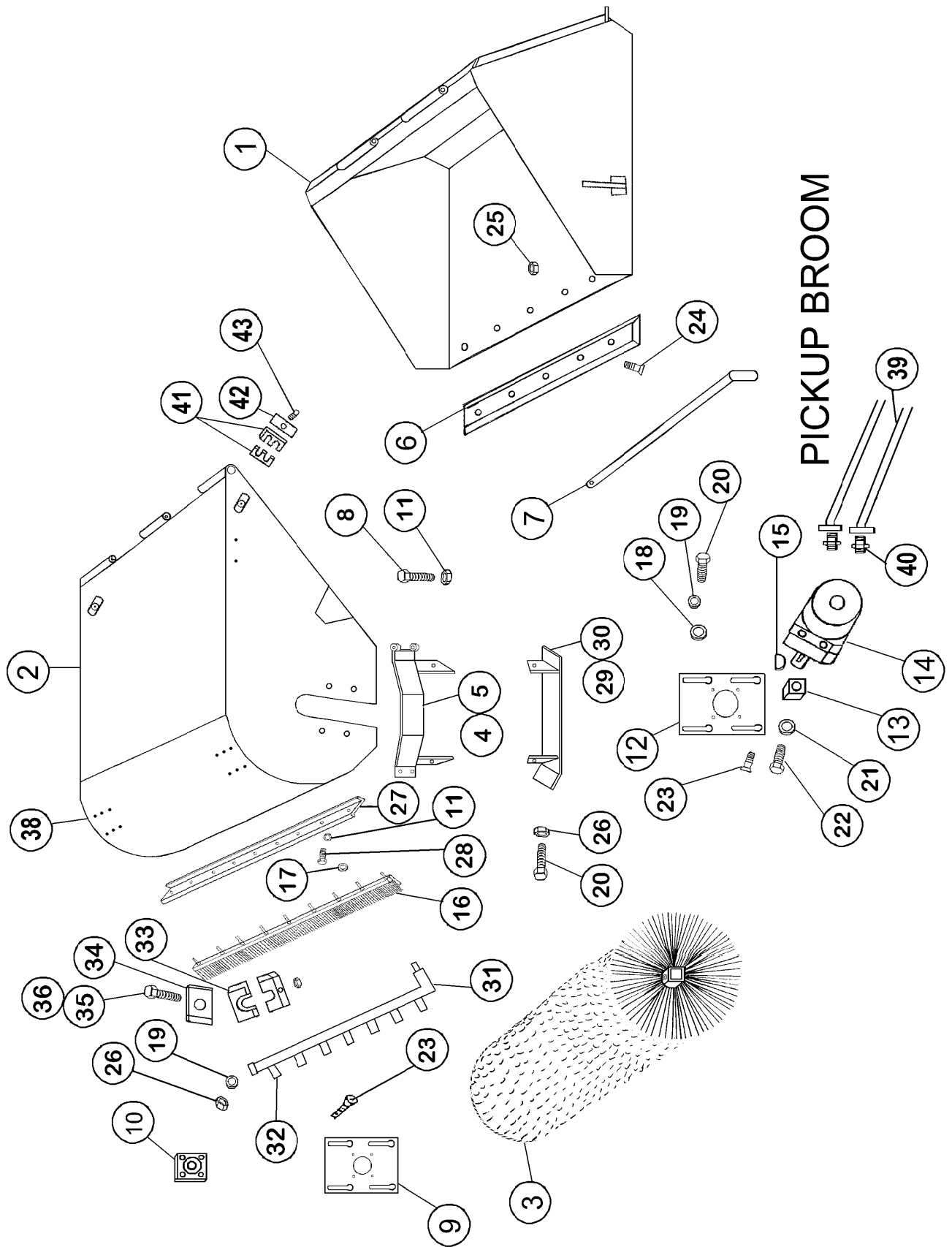
1. Disconnect the hose quick couplers from the host machine and remove the hose clamps from the Pickup Broom cowl.
2. Remove the four (4) 3/8" capscrews from the slots of the adjusting plates on each end of the Brush.
3. With a lifting device raise the cowl high enough to remove the brush from under the cowl.

4. Loosen the set screws on the R.H. bearing inner flange and remove the bearing and its mount from the brush shaft.

Remove the motor from the brush.

To replace the brush first check that the socket head capscrew retaining the motor drive square is tight (14 lb. ft.). The four motor mount bolts (47 lb. ft.). Lubricate the drive square with anti seize or grease and install the drive into the brush square drive tube. Install the bearing and its mount onto the R.H. shaft of the brush. Check the torque of the four mounting screws (47 lb. ft.). Leave the bearing inner flange set screws loose at this time.

5. Position the brush under the cowl and lower the cowl while aligning the four (4) slots with the tapped holes. Install and tighten 3/8 x 1 1/2" capscrews and washers at the highest setting. Tighten the bearing inner race set screws. Check the brush depth adjustment per 6.3 and readjust if needed.



PICKUP BROOM

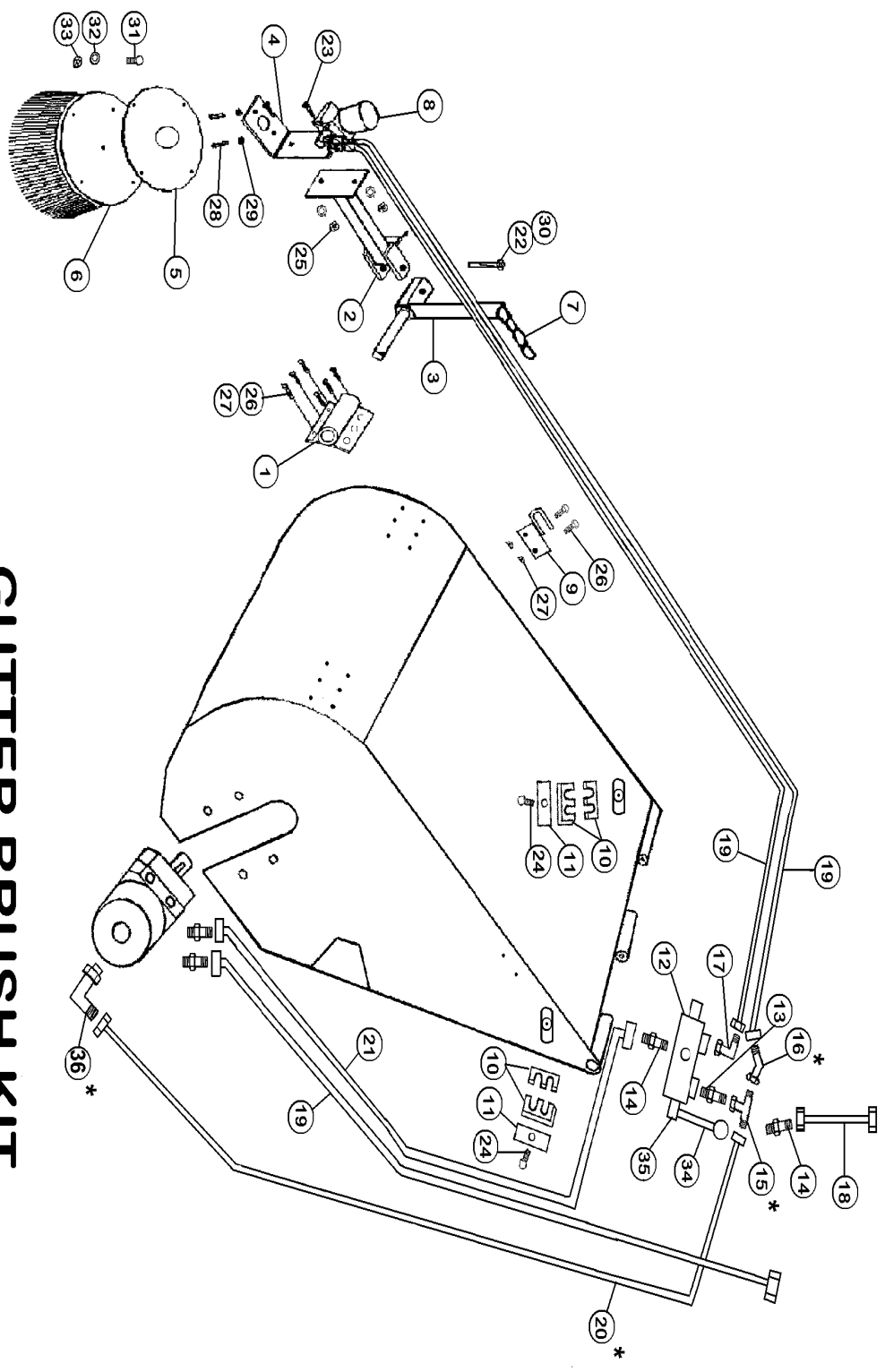
PICKUP BROOM PARTS LIST

ITEM	PART NUMBER	DESCRIPTION	QTY
1	56230	Bucket PB 1800	1
1	56231	Bucket PB 1500	1
2	56257	Cowl Broom PB 1800	1
2	56258	Cowl Broom PB 1500	1
3	56270	Brush Assy PB 1800	1
3	56271	Brush Assy PB 1500	1
4	56352	Motor Guard/with Skid	1
4	56423	Motor Guard/no Skid	1
5	56353	Bearing Guard/with Skid	1
6	56272	Cutting Edge PB 1800	1
6	56273	Cutting Edge PB 1500	1
7	56264	Pin Hinge PB 1800	1
7	56265	Pin Hinge PB 1500	1
8	50A-0536	5/16 - 18 x 4 1/2 HHCS	2
9	56234	Adjuster Bearing Side S/N-PB 1001 thru PB 1006	1
9	56390	Adjuster Bearing Side S/N-PB 1007 and Up	1
10	56274	Bearing Assy	1
11	30C-05	5/16 - 18 Nylok Nut	10
12	56235	Adjuster Motor Side S/N-PB1001,1004,1005 & 1006	1
12	56389	Adjuster Motor Side S/N-PB1002,1003,1007 & Up	1
13	56261	Driver Motor Shaft S/N 1001-1004-1006-1007 & Up 1" Shaft	1
13	56340	Driver Motor Shaft S/N 1002-1003-1005-1007 & Up 1 1/4" Shaft	1
14	56275	Motor S/N PB1004-1006	1
14	56251	TCI Motor S/N PB1002-1003-1005-1007 & Up 1 1/4" Shaft	1
14	56251W	White Motor S/N PB1007 & Up 1" Shaft	1
14	56645	Seal Kit TCI Motor	AR
14	56646	Seal Kit White Motor	AR
15	20H-808	Woodruff Key S/N1001-1004-1006	1
15	20C-050520	Parallel Key S/N1002-1003-1005-1007 & Up	1
16	56388	Strip Brush Assy PB1800	1
16	56463	Strip Brush Assy PB1500	1
17	30A-06	3/8 - 16 Nut	16
18	14A-06	3/8 Lock Washer	8
19	14C-06	3/8 Flat Washer	8
20	50A-0610	3/8 - 16 x 1 1/4 HHCS	8
21	56262	Retainer Washer	1
22	50D-0407	1/4 - 20 x 7/8 SHCS	1
23	50E-0612	3/8 - 16 x 1 1/2 Socket FHCS S/N1001-1004-1006	4
23	51E-0814	1/2 - 20 x 1 3/4 FHCS S/N1002-1003-1005-1007 & Up	4
24	40F-1012	5/8 x 1 1/2 Plow Bolt PB1800	6
24	40F-1012	5/8 x 1 1/2 Plow Bolt PB1500	5
25	30A-10	Nut PB1800 Cutting Edge	6
25	30A-10	Nut PB1500 Cutting Edge	5
26	30C-06	3/8 - 16 Nylok Nut	4

PICKUP BROOM PARTS LIST CONTINUED

ITEM	PART NUMBER	DESCRIPTION	QUANTITY
27	56350	Bar Front Brush & Spray PB1500	1
27	56237	Bar Front Brush & Spray PB1800	1
28	50A-0506	Capscrew 5/16" x 3/4"	8
29	56375	Skid - Motor Side Optional	1
30	56376	Skid - Bearing Side Optional	1
31	55471	Spray Bar & Nozzles 60"	AR
32	54421	Nozzle	AR
33	56002	Clamp Pair	AR
34	56017	Clamp Top Plate	AR
35	50A-0416	1/4 20 x 2 HHCS	6
36	30C-04	1/4 20 Nut	6
37	55745	Spray Bar Kit 60" - Optional - Inc 31, 32, 33 & 34	
37	55746	Spray Bar Kit 72" - Optional - Inc 31, 32, 33 & 34	
38	56537	Plastic Plugs for Holes	16
39	56371	Hose 1/2 x 120	2
40	111E-0810	Adapters	2
41	56372	Hose Clamp Pair	2
42	56373	Hose Clamp Plate	2
43	50A-0514	HHCS 5/16 - 18 x 1 3/4	2
44	56616	Chain Kit (Not Shown)	1 Opt

GUTTER BRUSH KIT 56392



		GUTTER BRUSH KIT (56392) PARTS LIST	
--	--	--	--

ITEM	PART NUMBER	DESCRIPTION	QUANTITY
1	56393	Pivot Bracket	1
2	56396	Arm	1
3	56402	Pivot Assy	1
4	56407	Motor Bracket	1
5	56408	Brush Adapter	1
6	56473	Gutter Brush	1
7	56494	Adjustment Chain	1
8	56370	Motor	1
9	56495	Chain Hook	1
10	56372	Hose Clamp Pair	2
11	56373	Hose Clamp Plate	2
12	56467	Valve	1
13	56472	Check Valve	1
14	111E-0808	Adapter Str JICM/SAEM	2
15 *	112D-0808	Adapter Tee JICF/JICM	1
16*	112A-0808	Adapter 45 Degree JICF/JICM With Case Drain	1
16	112B-0808	Adapter 90 Degree JICM/SAEM Without Case Drain	1
17	111B-0808	Adapter 90 Degree JICM/SAEM	1
18	56399	Hose 1/2 x 85	1
19	56371	Hose 1/2 x 120	3
20*	56471	Hose 3/8x 37 Case Drain	1
21	56363	Hose 1/2 x 37	1
22	50A-1032	HHCS 5/8 - 11x 4	1
23	50A-0608	HHCS 3/8 - 16 x 1	2
24	50A-0514	HHCS 5/16 -18 x 1 3/4	2
25	30C-06	Nut 3/8 -16	2
26	50A-0408	HHCS 1/4 - 20 x 1	8
27	30C-04	Lock Nut 1/4 - 20	8
28	50A-0812	HHCS 1/2 -13 x 1 1/2	2
29	30C-08	Lock Nut 1/2 - 13	2
30	30C-10	Lock Nut 5/8 x 11	1
31	50A-0514	HHCS 5/16 - 18 x 1 3/4	4
32	14C-05	Washer 5/16	4
33	30C-05	Lock Nut 5/16 -18	4
34	54184	Lever	AR
35	56400	Pivot Box	AR
36	112B-0604	Adapter 90 Degree JICM/SAEM	1

Note * Used With Case Drain Type Motor Only

9. OPTION - GUTTER BRUSH

9.1 INSTALLING A GUTTER BRUSH

1. Remove plugs from holes in either the right or left side of the unit (depending on which side you want to install the Gutter Brush).
2. Install the Gutter Brush mounting plate (Item 1), page 21 using six (6) capscrews.
3. Mount the motor on the motor mount plate (Item 4 & 8), page 21.
4. Install the motor mounting plate on the arm (Item 2), page 21.
5. Slide the arm inside the tube on the Gutter Brush mounting plate (Item 3), page 21. Secure with a cotter pin.
6. Install the chain hook (Item 9), page 21. Connect chain to chain hook.

(SEE ADJUSTING GUTTER BRUSH)

9.2 ADJUSTING THE GUTTER BRUSH

1. Adjust the height of the Brush with the chain so that the front of the Brush is on the ground with sufficient area to sweep cleanly.
2. Adjust the Gutter Brush swing with the adjusting bolt and lock nut on the rear side of the arm.

9.3 USING THE GUTTER BRUSH

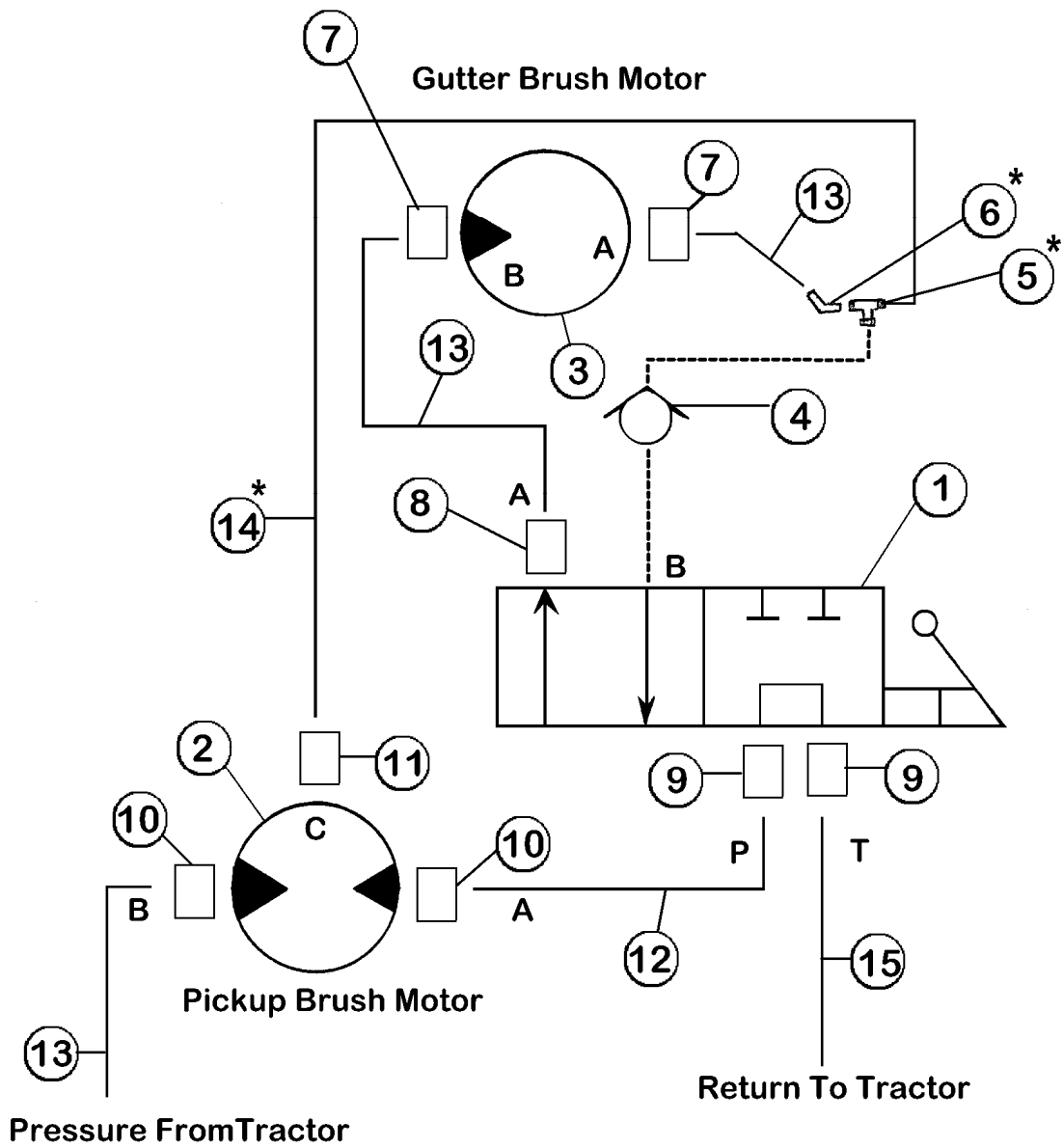
The selector valve of the Coneqtec Universal Gutter Brush attachment allows the Gutter Brush to be shut off so that the pickup brush can be run in the forward or reverse direction. With the lever shifted to the left, only the Pickup Broom will run. Shift the lever to the right to run the Gutter Brush, in this position the Pickup Brush will only run in the forward direction.

When sweeping next to walls or curbs only the Gutter Brush bristle tips should touch the vertical surface.

When not using the Gutter Brush, raise the Brush off the ground 3 to 4 inches by shortening the chain and shift the selector valve to the Pickup Brush only position.

9.4 REPLACING THE GUTTER BRUSH

1. Remove the four capscrews attaching the worn Gutter Brush to the Gutter Brush adapter.
2. Attach a new Brush using capscrews just removed.
3. Readjust Gutter Brush.

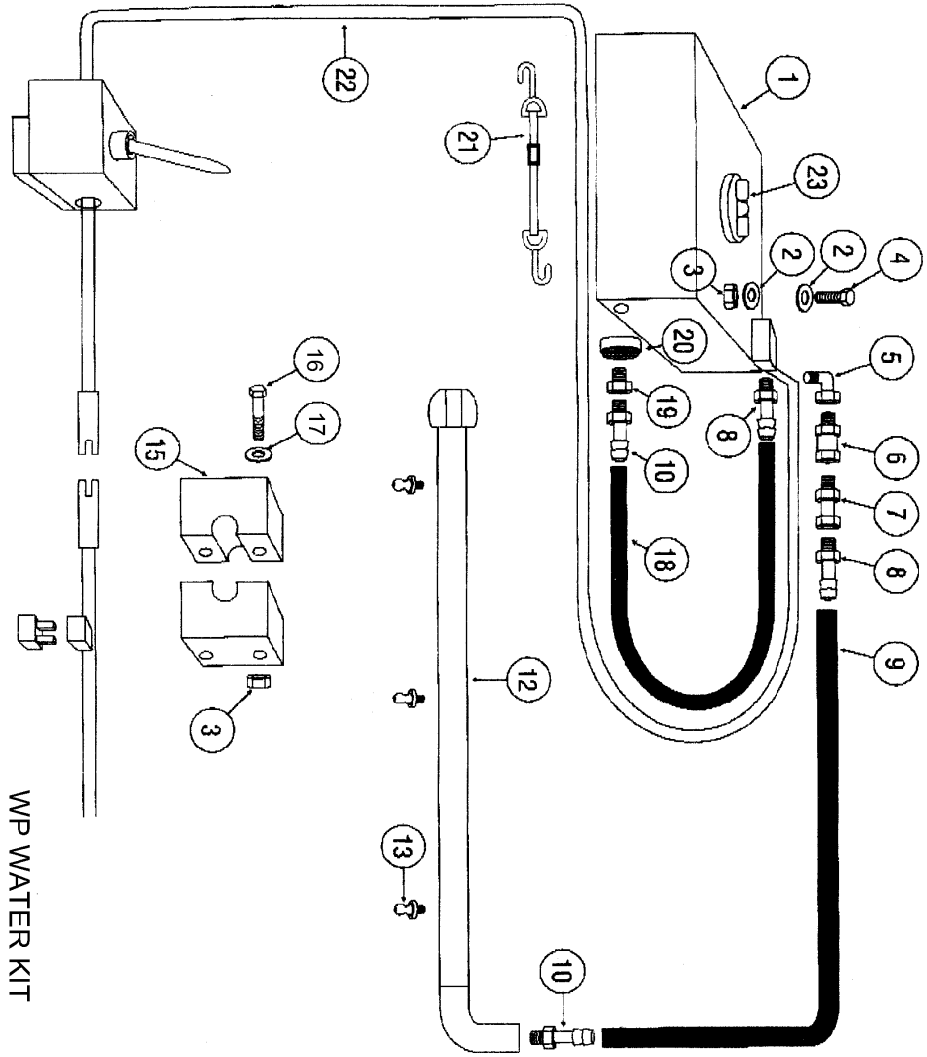


GUTTER BRUSH HYDRAULIC SCHEMATIC

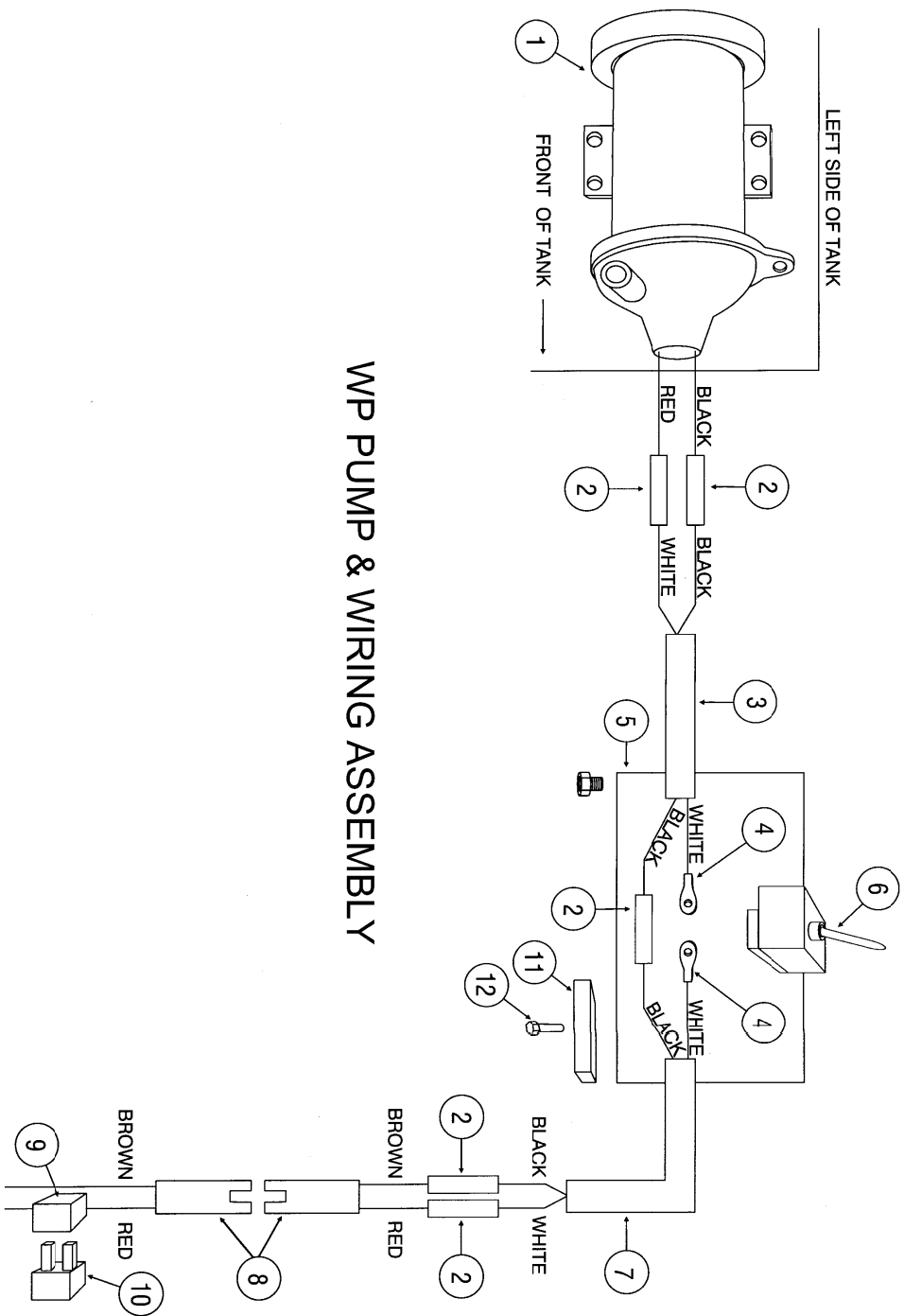
**GUTTER BRUSH HYDRAULIC SCHEMATIC
PARTS LIST**

ITEM #	P/N	DESCRIPTION	QUANTITY
1	56467	Selector Valve	1
2	56251	Pickup Brush Motor	1
3	56370	Gutter Brush Motor	1
4	56472	Check Valve	1
5 *	112D-0808	Tee	1
6	112A-0808	45 Degree Elbow JICF/JICM	1
7	111B-0810	90 Degree Elbow JICM/SAEM	2
8	111B-0808	90 Degree Elbow JICM/SAEM	1
9	111E-0808	Str JICM/DAEM	2
10	111E-0810	Str JICM/SAEM	2
11 *	111B-0604	90 Degree Elbow JICM/SAEM	1
12	56363	Hose 1/2 x 37"	1
13	56371	Hose 1/2 x 120"	3
14 *	56471	Hose 3/8 x 37 Case Drain	1
15	56399	Hose 1/2 x 85	1

Note : * Used With Case Drain Type Motor Only



<u>WPS WATER KITS</u>			
<u>LPB BROOMS</u>			
ITEM	P/N	DESCRIPTION	QTY
1	54621	Tank 55 Gal (inc item 23)	1
2	14C-04	Washer Flat 1/4"	12
3	30C-04	Nut Nyllok 1/4-20	6
4	50A-0408	HHCS 1/4-20 x1"	4
5	115J-06	Steet EL 3/8"	1
6	55912	Quick Coupler Female	1
7	55913	Quick Coupler Male	1
8	106A-0606	Pushlok Fitting2	2
9		Hose 3/8" Pushlok	1
10	106A-0806	Pushlok Fitting	2
12*	55471	Spray Bar LPB 1500	1
12*	55746	Spray Bar LPB 1800	1
13	54421	Nozzle as Required	AR
15	56002	Clamp	3
16	50A-0422	HHCS 1/4-20 x 2 3/4"	6
17	56017	Plate Clamp	3
18	54441	Hose 3/" Pushlok 24"	1
19	115B-1208	Bushing Reducing	1
20	55941	Screen	1
21	54443	Tiedown Strap	2
22	55942	Wiring Assy Kit(see pgs 44 & 45`	1
23	55017	Tank Cap 8"	1
23	56007	Tank Cap 6"	1
Assembly Instructions For WP Water Kits			
1	Bolt pump assembly to top of tank at holes provided		
2	Install 55941 screen Item 20 pg 50 into outlet hole in tank		
3	Install Items 19,10 & 18 pg 50 between tank outlet and inlet of pump		
4	Mount tank on top of Skid Steer roof using Item 21 tiedowns hooked into cab sides to secure tank to cab roof		
5	Connect female electric plug to a suitable 12 volt source on your Skid Steer. Plug the connector into it and locate the magnetic box in a convenient location.		
6	Install the spray tube Item 12 pg 50 to the planer using Items 3,15,16&17to secure the spray tube to the planer. Align the nozzles with the holes and have the hose fitting on the left (motor) side of the planer.		
7	Disregard # 6 if tube assembly is already on the planer		



WP PUMP & WIRING ASSEMBLY

55942 WP PUMP & WIRING ASSEMBLY

<u>ITEM</u>	<u>P/N</u>	<u>DESCRIPTION</u>	<u>QTY</u>
1	54422	Pump	1
2	133B-00	Butt Connector	1
3	54438	Cable 14/2 60"	1
4	130B-03	Ring Terminal	1
5	54435	Switch Box	1
6	54434	Switch	1
7	54437	Cable 14/2 24"	1
8	54432	Connector	1
9	52058	Fuse Holder	1
10	54433	Fuse	1
11	54768	Magnet	1
12	55940	Rivet Pop	1
13	55845	Cable & Switch Box Assy (Inc. 2-12)	1